

AVISTA CORPORATION

Amended

SPOKANE RIVER AND POST FALLS HYDROELECTRIC DEVELOPMENTS RECREATION PLAN

FERC LICENSE ARTICLES 416 & 417

SPOKANE RIVER HYDROELECTRIC PROJECT
FERC PROJECT No. 2545

Prepared by:
REC Resources

Amended by:
Avista

May 19, 2015

TABLE OF CONTENTS

1.0	INTRODUCTION	1
1.1	Plan Purpose.....	1
1.2	Project Area Description	1
1.3	Plan Consultation and Review	2
1.4	Plan Organization.....	3
2.0	POST FALLS HYDROELECTRIC DEVELOPMENT.....	4
2.1	Q'emiln Park	4
2.1.1	Trail Enhancements	4
2.1.2	Post Falls South Channel Dam Spillway Gate Replacement Project - South Channel Dam Overlook	4
2.2	Falls Park.....	4
2.2.1	Trail, Overlook and Interpretive Display Enhancements	4
2.3	Boat Ramp Extensions	5
2.4	Higgen's Point Launch and Day Use Area	6
2.4.1	Shoreline Stabilization and Dock Reconstruction	6
2.5	Trailer Park Wave Access.....	6
3.0	MONROE STREET HYDROELECTRIC DEVELOPMENT.....	8
3.1	Huntington Park	8
4.0	NINE MILE HYDROELECTRIC DEVELOPMENT	9
4.1	Dam and Powerhouse Area.....	9
4.1.1	Interpretive Displays and Overlook Development	9
4.1.2	Boat Take-Out Development	9
5.0	LONG LAKE HYDROELECTRIC DEVELOPMENT	10
5.1	Lake Spokane	10
5.1.1	Boat-in-Only Campsite Development.....	10
5.2	Spokane House.....	10
5.2.1	Interpretive Display Redevelopment	10
5.3	Nine Mile Recreation Area Assessment.....	10
5.3.1	Recreation Area Reconfiguration	10
5.4	Long Lake Dam Overlook.....	11
5.4.1	Overlook Redevelopment	11
5.5	Long Lake Dam Picnic Area.....	11
5.5.1	Boat Launch Development and Parking and Picnic Facility Improvements	11

APPENDICES

Appendix A. FERC License Articles Requiring Recreation Plan

Appendix B. Project Overview Maps

Appendix C. Drawings and Locations Maps

Appendix D. 2015 Consultation Record

1.0 INTRODUCTION

1.1 Plan Purpose

This Spokane River Hydroelectric Project Recreation Plan (Plan) provides information related to recreation resource enhancements at the Spokane River Hydroelectric Project (Project). The Project is owned by Avista Utilities (Avista) and is licensed by the Federal Energy Regulatory Commission (FERC) as Project Number 2545. The Project consists of five hydroelectric developments (HEDs): the Post Falls HED in Idaho and the Upper Falls, Monroe Street, Nine Mile, and Long Lake HEDs in Washington.

The FERC license was issued to Avista on June 18, 2009 and contains two articles related to the development of recreation plans (*Appendix A*). **Article 416** requires a recreation plan for enhancements at “Spokane River Developments,” which are the Upper Falls, Monroe Street, Nine Mile, and Long Lake HEDs. **Article 417** requires a recreation plan for enhancements at the Post Falls HED.

This Plan combines both license-required recreation plans in one document. The intent is to meet license requirements, facilitate a Project-wide approach to recreation planning, and provide FERC, Avista and its stakeholders with one primary point-of-reference for Project related recreation resource enhancement information.

The Plan provides an overview of recreation enhancements, including information about what, where, and when projects will occur, Avista’s capital development contributions, and operation and maintenance (O&M) responsibilities.

All of the O&M and capital costs identified in the Plan have been agreed to through side settlement agreements or management agreements, and are based on Avista’s and its partner agencies’ best estimates for implementing the measures. Avista has Non-License Settlement Agreements with the Forest Service, Bureau of Land Management, Washington State Department of Natural Resources, Washington State Parks and Recreation Commission, Idaho Department of Parks and Recreation, Idaho Department of Fish and Game, Kootenai County Parks and Waterways, and the Post Falls Parks and Recreation Department.

These agreements outline roles and responsibilities associated with capital development and O&M. Based on these agreements, Avista will continue to work in collaboration with its partners in the planning, development and maintenance of facility enhancements.

1.2 Project Area Description

The Plan guides recreation resource enhancement within the Project boundary established for the Project by FERC. The Project boundary surrounds the lands and waterbodies that are directly related to operation of the Project’s five HEDs.

Generally, the Project boundary follows the normal high-water line around impoundments created or modified by operation of the dams. In Idaho, the Project boundary follows the Spokane River upstream from Post Falls HED to Coeur d’Alene Lake, where it encompasses that waterbody, and also follows the shorelines of its tributaries (Coeur d’Alene River, St. Joe River, and St. Maries River) upstream to points where the dam no longer influences water flow. A map showing the location of the Project boundary and recreation enhancement sites is included in *Appendix B, Figure 1*.

In Washington, the boundary associated with the Upper Falls and Monroe Street HEDs follows the Spokane River's shoreline upstream through downtown Spokane, and at the Nine Mile and Long Lake HEDs it includes Nine Mile Reservoir and Lake Spokane respectively. A map showing the location of the Project boundary and recreation enhancement sites is included in *Appendix B, Figure 2*.

In addition to these waterbodies, upland areas in the vicinity of the dams and powerhouses are within the Project boundary, as are some other lands closely associated with the Project that are owned by Avista or public agencies. Recreation areas within the boundary include overlooks, picnic areas, trails, boat launches, campsites, swimming beaches and open space.

1.3 Plan Consultation and Review

The License requires Avista to develop the Plan in consultation with the following agencies, including:

- Washington Department of Fish and Wildlife;
- Washington State Parks and Recreation Commission;
- Washington Department of Natural Resources;
- Idaho Department of Fish and Game;
- Idaho Department of Parks and Recreation;
- Idaho State Historic Preservation Office;
- U.S. Bureau of Land Management; and
- U.S. Fish and Wildlife Service.

In addition to the above entities, Avista sought input and comments from the following recreation management agencies:

- U.S. Forest Service;
- Kootenai County Parks and Waterways; and
- Post Falls Parks and Recreation Department.

A draft of this Plan was distributed to the above-referenced entities in April 2010 for a 30-day review and comment period. Copies of agency comments and recommendations, and Avista's responses of how they are accommodated by the Plan, are included in *Appendix D*. Avista submitted the Plan to FERC for approval on May 26, 2010, which FERC approved on October 24, 2011.

Following FERC's approval of the Plan, a number of agencies requested Avista revise the Plan to address changes in schedules, scopes of work and potential changes in recreation site locations. To address their recommendations and necessary access changes that Avista would like to implement at Huntington Park, Avista submitted an amended Plan to FERC for approval on November 19, 2012. FERC responded to Avista on January 11, 2013 with an Additional Information Request, in regard to the recommended amendments. Avista submitted an Amended Recreation Plan, including the information sought by FERC in March 2013. FERC approved the Amended Recreation Plan on June 12, 2013.

Copies of the agencies' comments and recommendations in regard to previous amendments, as well as Avista's responses, are included in *Appendix D*.

1.4 Plan Organization

The Plan provides information about enhancements at recreation sites, which are organized by HEDs. For this Plan's purposes, the HEDs are ordered proceeding downriver from the Post Falls HED.

For each recreation site, enhancements are described and information is provided related to:

- Implementation date for facilities that have not yet been completed;
- Conceptual and site drawings, as appropriate for facilities that have not yet been completed;
- Soil erosion and sediment control measures to be used where ground-disturbing activities are proposed;
- How the needs of the disabled were considered in the planning and design of the recreation facilities;
- Provisions for trash clean-up and removal;
- Operation and maintenance responsibilities; and
- Avista's capital development contributions.

The Plan also includes information about the Post Falls South Channel Dam Spillway Gate Replacement Project and the related South Channel Dam Overlook.

2.0 POST FALLS HYDROELECTRIC DEVELOPMENT

2.1 Q'emiln Park

2.1.1 Trail Enhancements

Avista, in cooperation with Post Falls Parks and Recreation Department, improved the trail system in 2013. The park currently provides 2.2 miles of trail for a variety of purposes, including nature trails and access to rock climbing areas. Improvements included signage on trails and at trailheads, trail reconstruction and repair, and the elimination and revegetation of informal trails.

The trail system provides access to rock climbing opportunities and follows natural landscape contours along rocky, steep hillsides that exceed grades appropriate for ADA accessibility. However, ADA-compliant trails are available at Falls Park, located on the opposite shoreline.

2.1.2 Post Falls South Channel Dam Spillway Gate Replacement Project - South Channel Dam Overlook

By December 31, 2015, Avista, in cooperation with Post Falls Parks and Recreation Department, will develop an overlook and crane pad at the South Channel Dam as part of Avista's Post Falls South Channel Dam Spillway Gate Replacement Project. Construction of an ADA overlook near the dam with interpretive sign(s), improvements to a hiking trail that parallels the south channel of the river, ADA parking area, permanent dam access road and crane pad, boat staging areas leading to and from the nearby boat launch will take place during the spring/summer of 2015.

Per the management agreement with Avista, Post Falls Parks and Recreation Department will be responsible for operating and maintaining the facilities, including trash clean-up and removal at the park. Avista will contribute up to \$35,000 annually for O&M of the park.

Avista will be responsible capital development costs of the new ADA overlook near the dam, trail improvements, interpretive sign(s), ADA parking area, permanent dam access road and crane pad, landscaping and boat staging areas. There are no capital development cost estimates at this time for these improvements.

2.2 Falls Park

2.2.1 Trail, Overlook and Interpretive Display Enhancements

Avista, in cooperation with Post Falls Parks and Recreation Department, developed interpretive displays and improved the existing trail system that provides access between the parking area and scenic overlooks and other park features.

The trail system and overlooks are existing facilities and enhancements included trail surface improvements, fencing, and updated informational and interpretive signs.

The trail system consists of 2,200 feet of ADA-accessible trail and 825 feet of informal soft paths.

Per the management agreement with Avista, Post Falls Parks and Recreation Department will be responsible for operating and maintaining the facilities, including trash clean-up and removal. Avista contributes \$20,000 annually for O&M of the park.

2.3 Coeur d'Alene Lake Boat Ramp Extensions

Boat ramps at four of five existing recreation sites were extended to facilitate use at lower water elevations during the winter season. The extensions are all located at existing agency owned boat ramps, and are one-time measures. Per paragraph No. 185 of the License, FERC Staff concluded that the License does not require these facilities to be made Project facilities, because the improvements are one-time measures to other entities' facilities and are not needed for Project purposes. The boat ramps, however, will remain part of our Spokane River Project Recreation Plan, unless otherwise directed by FERC.

In accordance with our Off-License Settlement Agreements with recreation management agencies, the agencies are responsible for operating and maintaining the boat ramps, which are integral to their existing facilities, including trash clean-up and removal. Avista does not fund annual O & M at these sites.

Chatcolet Use Area

The Idaho Department of Parks and Recreation (IDPR) assessed the need to extend the Chatcolet boat ramp and determined that an extension is not currently needed. This is because the boat ramp is iced in during most of the winter, and because of the recent Rocky Point boat ramp extension. The ramps are within a mile and a half of each other.

The IDPR will re-evaluate the Chatcolet boat ramp in five to six years to determine if improvements are needed then. If IDPR determines the boat ramp needs extended in the future, they will work with Avista and the other recreation management agencies to use Avista's Off-License Settlement Agreement funds to prioritize the ramp with other projects. This will be completed in accordance with all of the Off-License Settlement Agreements that Avista has for the Post Falls HED.

Rocky Point

Avista, in cooperation with IDPR, extended the boat ramp.

Sun-Up Bay Access

Avista, in cooperation with Kootenai County, extended the boat ramp.

Harrison Launch

Avista, in cooperation with Kootenai County, extended the boat ramp.

Round Lake Boat Ramp

The Idaho Department of Fish and Game (IDFG) has recently completed the IDFG Boating Access Plan, which addresses boating access needs on Coeur d'Alene Lake. Based upon the results of the Plan, IDFG determined that the Round Lake boat ramp extension is not needed, due to the remote location of the site, low visitation, and the availability of nearby boat ramps that have already been extended. In 2013, Avista and IDFG requested to reallocate the funds allotted for Anderson Lake boat ramp to be used to extend the Round Lake boat ramp, because we believed the Round Lake boat ramp was going to rank as a top priority, primarily due to its southern exposure and use by waterfowl hunters. However, this was not the case. Most boaters and waterfowl hunters choose not to use the Round Lake boat ramp because it is too remote and challenging to get to during the winter season, compared to other accessible sites.

IDFG and Avista agree that all of the IDFG boat ramps that should be extended for off-season use have been completed. IDFG will reassess its Boating Access Plan in 2019, and will work with Avista and other recreation management agencies to determine where our efforts would best be utilized per Avista's Off-License Settlement Agreements.

St. Maries Launch

Avista, in cooperation with IDFG, extended the boat ramp.

2.4 Higgen's Point Launch and Day Use Area

2.4.1 Shoreline Stabilization and Dock Reconstruction

By December 31, 2016, Avista will, in cooperation with Idaho Department of Parks and Recreation, stabilize selected site locations along the shoreline in the boat launch area, and reconstruct the docks at the boat-in-only site. This one-year extension is necessary because Avista was not able to draw Coeur d'Alene Lake down to the level necessary to complete the work during the winter of 2014/2015. This was due to warm weather, rain on snow events, and the need to coordinate river flows with multiple Spokane River construction project schedules.

Conceptual drawings showing the location of the shoreline stabilization areas and docks at the boat-in-only site are included in *Appendix C, Figure 1*.

Minimal ground-disturbing activities will occur related to the dock reconstruction. The shoreline stabilization will entail placement of riprap, and appropriate soil erosion and sediment control measures will be employed as necessary.

Opportunities to better accommodate the needs of the disabled are not applicable for the shoreline stabilization projects. However, dock reconstruction at the boat-in-only site will incorporate ADA-compliant gangways.

Per a Settlement Agreement with Avista, Idaho Department of Parks and Recreation will be responsible for operating and maintaining the facilities, including trash clean-up and removal. Avista will contribute \$10,000 annually for O&M of the facilities.

Avista will contribute up to \$100,000 for capital development costs related to these recreation resource enhancements.

The Higgen's Point Launch and Day Use Area improvement is a one-time measure owned and operated by the IDPR. Per paragraph No. 185 of the License, FERC Staff concluded that the License does not require this facility to be made a Project facility, because the improvements are a one-time measure to another entity's facilities and are not needed for Project purposes. Higgen's Point Launch and Day Use Area will however, remain part of our Spokane River Project Recreation Plan, unless otherwise directed by FERC.

2.5 Trailer Park Wave Access

Avista developed the Trailer Park Wave Access site for carry-in-only boats on the north shore of the Spokane River, immediately downstream of the Post Falls HED. The 2.8-acre access site includes a five-car parking area, toilet, signage and a water access trail.

To address landowner concerns, the access site was screened along the southern property line, and the trail leading to the river was separated from the trailer park by a low fence, with openings to allow residents access to the trail and/or river.

The site includes an ADA-accessible parking space and toilet. The trail, however that leads to the carry-in-only boat launch is not ADA assessable due to the slope, terrain, and amount of available space.

Per the management agreement with Avista, Post Falls Parks and Recreation Department will be responsible for operating and maintaining the facilities, including trash clean-up and removal. Avista contributes \$10,000 annually for O&M of the access site.

3.0 MONROE STREET HYDROELECTRIC DEVELOPMENT

3.1 Huntington Park

Avista improved Huntington Park to accommodate visitor use that has changed since the park was initially developed. These improvements consisted of sidewalks, designed to separate pedestrian traffic from the service road, signage, planters, benches and small grassy areas.

The improvements allow the natural area/buffer to continue functioning as it has in the past, because virtually all of the improvements are confined to the more developed industrial part of the park, located between and/or immediately adjacent to the service road, the intake, penstock, powerhouse and Post Street Substation. All of the new trees and shrubs that were planted within the improved area are native and strategically located to screen the HED facilities from the natural components of the park, once they mature. The species composition is also compatible with the natural area/buffer, which primarily lies on the hillside south of the service road on City property located outside the Project Boundary.

Because of steep terrain, ADA accessibility within the park is not feasible. However, ADA-compliant trails and overlooks are available in the new Plaza that overlooks the park, across the river at Veteran's Park, at the Thornton Murphy Overlook, south of and adjacent to the park, and immediately upstream and adjacent at Riverfront Park. Avista funded these ADA facilities independent of the Huntington Park improvements to provide alternative viewing opportunities of the lower falls.

Per the management agreement with Avista, the City of Spokane Parks and Recreation Department will be responsible for operating and maintaining the park, including trash clean-up and removal. Avista contributes \$20,000 to \$30,000 annually for O&M of the park

4.0 NINE MILE HYDROELECTRIC DEVELOPMENT

4.1 Dam and Powerhouse Area

4.1.1 Interpretive Displays and Overlook Development

Avista developed interpretive displays and relocated the overlook to accommodate disabled individuals. Interpretive displays are located within the historic housing area and at an overlook between the Nine Mile Cottages and the Charles Road Bridge, which is immediately downstream from the spillway. A new ADA trail connects the two interpretive areas, overlook and ADA parking area.

Per a lease agreement with Avista, Washington State Parks and Recreation Commission (WSP) will be responsible for operating and maintaining the facilities, including trash clean-up and removal. Avista contributes \$85,000 annually for O&M of multiple Avista owned recreation facilities located near Nine Mile Falls and Lake Spokane.

4.1.2 Boat Take-Out Development

Avista developed a take-out for carry-in-only boats on the south shore of Nine Mile Reservoir immediately upstream from Nine Mile Dam. A four-car parking area, including ADA parking, was developed near the boat take-out.

Avista is negotiating to acquire a 2-acre parcel from WSP through purchase, land exchange, or an easement. Per a lease agreement with Avista, WSP will be responsible for operating and maintaining the facilities, including trash clean-up and removal. Avista contributes \$85,000 annually for O&M of multiple Avista owned recreation facilities located near Nine Mile Falls and Lake Spokane.

5.0 LONG LAKE HYDROELECTRIC DEVELOPMENT

5.1 Lake Spokane

5.1.1 Boat-in-Only Campsite Development

Avista developed ten boat-in-only, semi-primitive campsites on Lake Spokane at locations approved by FERC on December 3, 2012. Nine out of the ten campsites are located on Avista property and within the Project boundary. Signage identifies the campsites as part of the Spokane River Project. The campsites include campfire rings, portable toilets, picnic tables, and docks.

Because the campsites are semi-primitive, their design offers limited opportunities for disabled individuals. However, ADA-accessible camping opportunities are available at Lake Spokane Campground and Nine Mile Recreation Area (formally known as Nine Mile Resort).

Per a lease agreement with Avista, WSP will be responsible for operating and maintaining the facilities, including trash clean-up and removal. Avista contributes \$85,000 annually for O&M of multiple Avista owned recreation facilities located near Nine Mile Falls and Lake Spokane.

5.2 Spokane House

5.2.1 Interpretive Display Redevelopment

Avista assisted Washington State Parks in the redevelopment of interpretive displays at the Spokane House. The displays are compatible with the Historic Properties Management Plan, required under Article 421 of the Project license.

Spokane House is an ADA-accessible facility.

WSP will be responsible for operating and maintaining the facilities, including trash clean-up and removal. Avista is not funding annual O & M for this site.

5.3 Nine Mile Recreation Area Assessment

5.3.1 Recreation Area Reconfiguration

WSP has recently learned that their property, adjacent to the Nine Mile Recreation Area, which was identified for campground development, is located in the vicinity of two Bald Eagle nests and several historic dump sites, both of which significantly reduce the amount of developable space. Because of this, Avista and WSP will assess the feasibility of reconfiguring the Nine Mile Recreation Area in order to accommodate a limited but expanded campground immediately south of the recreation site. The assessment will be completed by December 31, 2015, per FERC's May 29, 2014 Order Approving Schedule Revisions and Granting Extension of Time, and will determine if the camping facilities are feasible and/or if the area should be further improved as a day-use-only area that provides swimming, picnicking, and boating access to Lake Spokane.

If the assessment indicates that the Nine Mile Recreation Area can be reconfigured, Avista will contribute up to \$175,000 for capital development in accordance with an existing agreement with WSP. Per the agreement WSP is responsible for and will continue operating and maintaining the facilities, including but not limited to trash clean-up and removal.

If, on the other hand, Avista and WSP determine the facilities at the recreation area should remain as they are and that an alternate site along Lake Spokane would be better suited for recreation improvements they will use some or all of the allotted capital funds on that development. WSP would be responsible for operating and maintaining the new recreation area, including but not limited to trash clean-up and removal.

The area currently provides ADA-accessible toilets, picnicking and parking, which will remain when the site is redeveloped.

5.4 Long Lake Dam Overlook

5.4.1 Overlook Redevelopment

Avista redeveloped the overlook to blend with the natural surroundings, reconfigure the parking area, trail and install interpretive signs.

The parking area, trail, and overlook are ADA accessible.

Per a lease agreement with Avista, WSP will be responsible for operating and maintaining the facilities, including trash clean-up and removal. Avista contributes \$85,000 annually for O&M of multiple Avista owned recreation facilities located near Nine Mile Falls and Lake Spokane.

5.5 Long Lake Dam Picnic Area

5.5.1 Boat Launch Development and Parking and Picnic Facility Improvements

Avista redeveloped the carry-in boat launch, located immediately adjacent to the Long Lake Picnic Area, the picnic area, parking areas, kitchen shelter, fencing and signage.

The picnic area's parking, toilet, tables, and kitchen area are ADA accessible.

Per a lease agreement with Avista, WSP will be responsible for operating and maintaining the facilities, including trash clean-up and removal. Avista contributes \$85,000 annually for O&M of multiple Avista owned recreation facilities located near Nine Mile Falls and Lake Spokane.

APPENDIX A
FERC LICENSE ARTICLES REQUIRING RECREATION PLAN

The following articles are included in the FERC license for the Spokane River Project (Project No. 2545), issued June 18, 2009.

Article 416. Spokane River Developments Recreation Plan. Within one year of license issuance, the licensee shall file for Commission approval a Recreation Plan to enhance recreation resources at the Spokane River developments. The plan, at a minimum, shall include the following measures:

- (1) Identify and develop up to 10 boat-in-only semi-primitive campsites on Lake Spokane, including a map or maps that identify the location of the campsites in relation to the developments' boundary and signage showing the campsites as part of the Spokane River developments. The sign shall meet the requirements of 18 C.F.R. § 8.2 (2008).
- (2) Continue to operate and maintain Huntington Park, located at the Monroe Street development, as a natural area/buffer.
- (3) At the Nine Mile development: (a) develop an interpretive center and (b) relocate the overlook to accommodate disabled individuals.
- (4) At the Spokane House, redevelop the interpretive displays in coordination with the Historic Properties Management Plan required under Article 421.
- (5) Immediately upstream from Nine Mile development: (a) identify and develop a boat take-out, and (b) develop a parking area near the boat take-out.
- (6) At the Nine Mile Resort, reconfigure the resort as a day-use area with boating access to Nine Mile reservoir.
- (7) At the overlook at Long Lake development: (a) redevelop the overlook to blend with the natural surroundings; (b) reconfigure the parking area; and (c) install interpretive signs.
- (8) At the river access at Long Lake development: (a) develop a carry-in boat launch immediately downstream from the Long Lake picnic area; and (b) improve the parking area and picnic facilities.

The recreation plan also shall include: (1) conceptual site drawings for each recreation site; (2) a description of soil erosion and sediment control measures to be used where ground-disturbing activities are proposed; (3) a discussion of how the needs of the disabled were considered in the planning and design of the recreation facilities; (4) a provision for trash clean-up and removal; (5) operation and maintenance costs; and (6) an implementation schedule.

The licensee shall develop the plan after consultation with the Washington Department of Fish and Wildlife (Washington DFW), Washington State Parks and Recreation Commission (Washington State Parks), Washington Department of Natural Resources (Washington DNR), and U.S. Fish and Wildlife Service (Fish and Wildlife Service). The licensee shall include with the plan documentation of consultation, copies of comments and recommendations on the completed plan after it has been prepared and provided to the entities, and specific descriptions of how the entities' comments are accommodated by the plan. The licensee shall allow a minimum of 30 days for the entities to comment and to make recommendations before filing the plan with the Commission. If the licensee does not adopt a recommendation, the filing shall include the licensee's reasons, based on project-specific information.

The Commission reserves the right to require changes to the plan. The licensee shall not begin implementing the plan until after the Commission notifies the licensee that the plan is approved. Upon Commission approval, the licensee shall implement the plan, including any changes required by the Commission.

The licensee shall operate and maintain or arrange for the operation and maintenance of the existing and new recreation facilities.

Article 417. Post Falls Development Recreation Plan. Within one year of license issuance, the licensee shall file for Commission approval a Recreation Plan to enhance recreation resources at the Post Falls development. The plan, at a minimum, shall include the following measures:

- (1) At Falls Park and Q'emiln Park, specific details for improving the Falls Park and Q'emiln Park existing trail systems, scenic overlooks, and interpretive displays. Details shall also include the length and description of each trail system.
- (2) At the Post Falls development, a provision for extending six boat ramps at: (a) Anderson Lake; (b) Sun Up Bay; (c) Lofts Bay; (d) Harrison; (e) Rocky Point; and (f) Chatcolet.
- (3) At the Higgen's Point Boat Launch, provisions for: (a) constructing a breakwater for the boat launch area; (b) stabilizing the shoreline; and (c) reconstructing the docks at the boat-in-only site.

The plan also shall include: (1) a map or maps that identify the location of three project recreation facilities: Falls Park, Q'emiln Park, and the Trailer Park Wave Access Site; (2) conceptual site drawings for each recreation site; (3) a description of soil erosion and sediment control measures to be used where ground-disturbing activities are proposed; (4) a discussion of how the needs of the disabled were considered in the planning and design of the recreation facilities; (5) a provision for trash clean-up and removal; (6) operation and maintenance costs; and (7) an implementation schedule.

The licensee shall develop the plan after consultation with the Idaho Department of Fish and Game (Idaho Fish and Game), Idaho Department of Parks and Recreation (Idaho DPR), U.S. Bureau of Land Management (BLM), and the Idaho State Historic Preservation Office (Idaho SHPO). The licensee shall include with the plan documentation of consultation, copies of comments and recommendations on the completed plan after it has been prepared and provided to the entities, and specific descriptions of how the entities' comments are accommodated by the plan. The licensee shall allow a minimum of 30 days for the entities to comment and to make recommendations before filing the plan with the Commission. If the licensee does not adopt a recommendation, the filing shall include the licensee's reasons, based on project specific information.

The Commission reserves the right to require changes to the plan. Implementation of the plan shall not begin until the licensee is notified by the Commission that the plan is approved. Upon Commission approval, the licensee shall implement the plan, including any changes required by the Commission.

Trailer Park Wave Access Site Assessment

Within one year of license issuance, the licensee shall, after consultation with Idaho DPR, Idaho Fish and Game, and Kootenai County Parks and Waterways, conduct an assessment at the proposed Trailer Park Wave Access Site, located immediately downstream from Post Falls dam, to determine the feasibility of developing the site for public access; and, if the site is not feasible,

identify an alternative boat access site. Amenities at the site shall include parking, a carry-in-only boat launch, a toilet, and signage.

Within 6 months after completion of the assessment, the licensee shall, after consultation with the above entities, file a report for Commission approval that shall include, but not be limited to, a discussion of the results of the assessment, documentation of consultation, copies of recommendations on the completed report after it has been prepared and provided to the entities, and specific descriptions of how the entities' comments are accommodated by the report. If the assessment indicates that the Trailer Park Wave Access Site shall be developed as a project facility, the report shall include a discussion of proposed measures, estimated operation and maintenance costs, and a provision to modify the Post Falls development boundary accordingly. The licensee shall allow a minimum of 30 days for the entities to comment and to make recommendations prior to filing the report with the Commission. If the licensee does not adopt a recommendation, the filing shall include the licensee's reasons based on project specific information.

The report also shall contain a provision for scheduled flow releases to provide whitewater boating at the Trailer Park Wave Access Site. To the extent that the flow releases shall not cause the licensee to violate Condition No. I (Lake Levels and Discharge Flows) of the Idaho water quality certification, the licensee shall release flows for whitewater boating ranging from a minimum flow of 3,300 cubic feet per second (cfs) to a maximum flow of 5,500 cfs from Post Falls dam into the Spokane River. The flow releases and schedule (dates and times) of flow releases, once approved by the Commission, shall be made available to the public via telephone or internet access.

The Commission reserves the right to require changes to the report. The report shall not be implemented until the licensee is notified that the report is approved. Upon Commission approval, the licensee shall implement the report, including any changes required by the Commission.

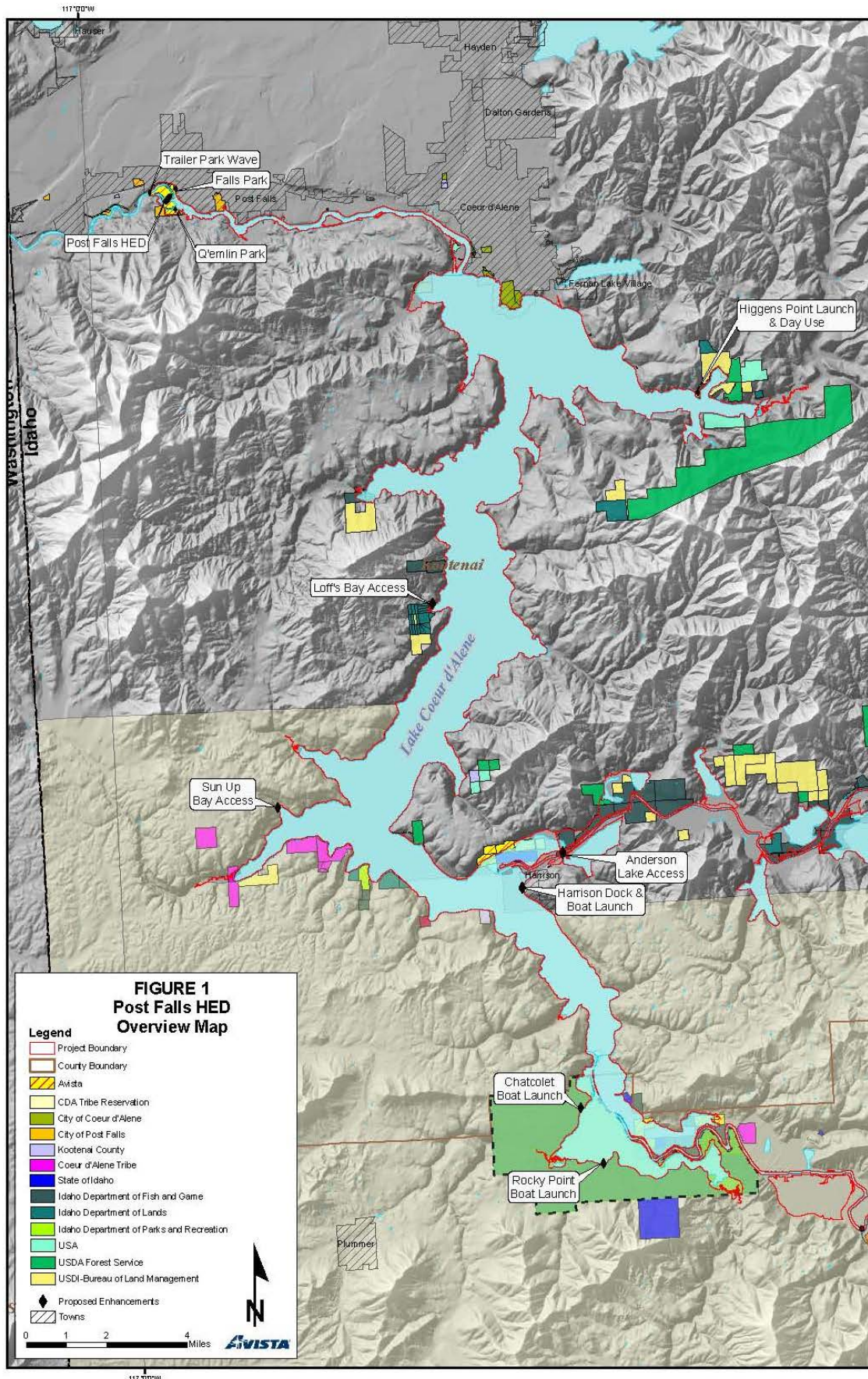
Revised Exhibit G Drawings

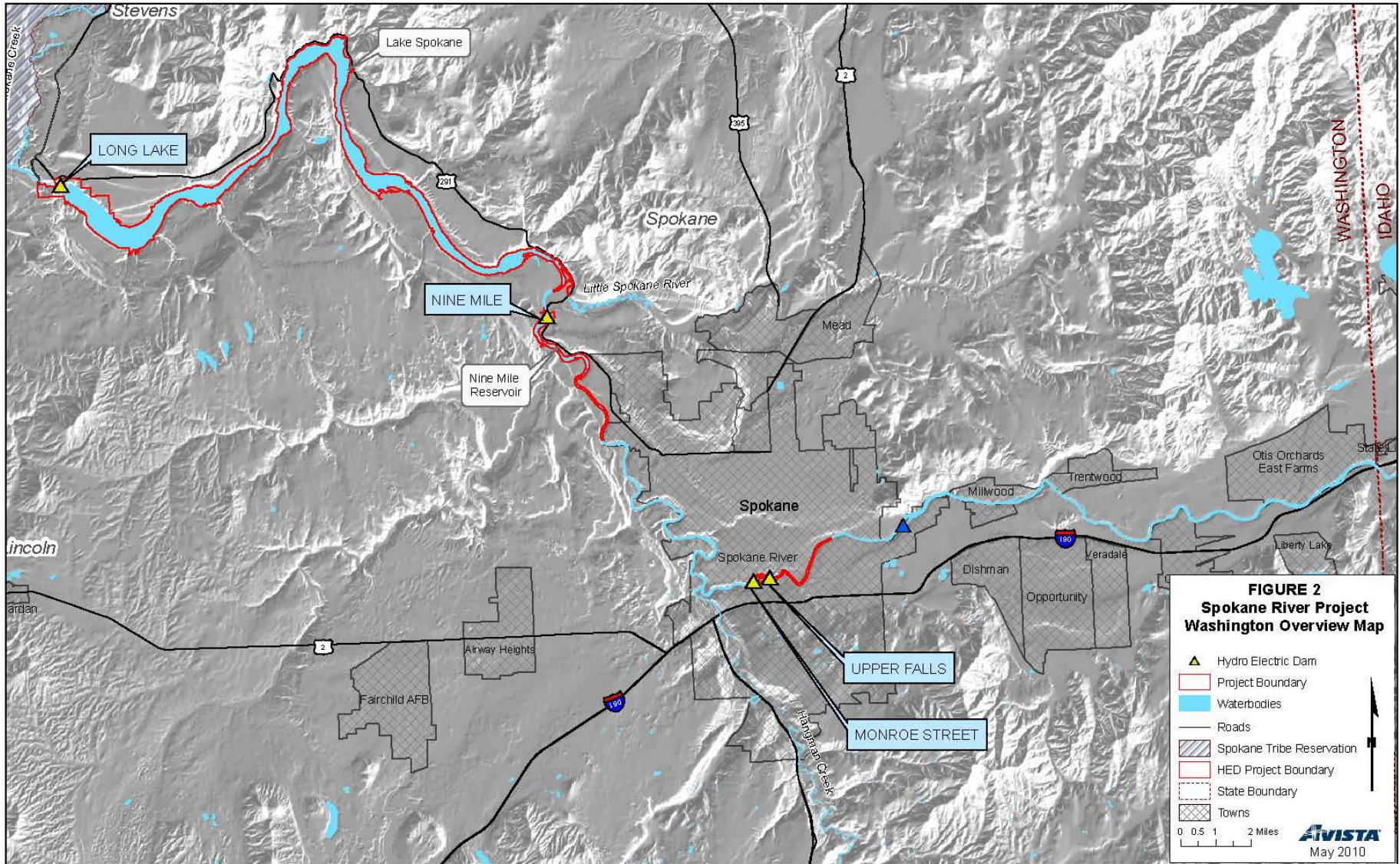
The licensee shall include a provision in the plan for filing revised Exhibit G drawings showing the recreation facilities at Q'emiln Park and the Trailer Park Wave Access Site enclosed within the project boundary.

Operation and Maintenance of Project Recreation Facilities

The licensee shall operate and maintain or arrange for the operation and maintenance of the existing and new recreation facilities.

APPENDIX B
PROJECT OVERVIEW MAPS





APPENDIX C
DRAWINGS AND LOCATION MAPS





NOTE:
 Landscaping improvements include hydro seeding disturbed areas with native grasses and establishing pockets of native vegetation with Service Berry, Mock Orange, Snowberry, etc. Gravel parking areas will also be refurbished.

POST FALLS SOUTH CHANNEL OVERLOOK - CRANE PAD AND RECREATIONAL ENHANCEMENTS		
AVISTA CORPORATION SPOKANE, WASHINGTON		
SCALE	DATE	APPROVED
DESIGN	CHECKED	
DRAWN	NOTED	
CHECKED	NOTED	DATE
DWG. NO.:		

APPENDIX D
2015 CONSULTATION RECORD

Subject: FW: HIGGEN'S SHORELINE PROJECT EXTENSION REQUEST

From: David White [<mailto:David.White@idpr.idaho.gov>]
Sent: Tuesday, January 20, 2015 2:03 PM
To: Wiley, Rene
Cc: Randall Butt
Subject: HIGGEN'S SHORELINE PROJECT EXTENSION REQUEST

Dear Rene',

As you know, we have been working together to complete the Higgen's Point area shoreline stabilization with a planned completion date of 2015. Unfortunately, IDPR is unable to conduct construction activities at Higgen's Point, due to the high water level of Lake Coeur d'Alene. Through discussions with Avista, IDPR understands that Lake Coeur d'Alene will not be drawn down and held at a consistent level due to warm weather, rain on snow events, and construction projects on several of the dams. Consequently, we are requesting an extension for the project.

If you have any questions or need additional information, please let me know.

Thanks in advance for the consideration.



David E. White
North Region Manager
IDPR North Region Service Center
2885 West Kathleen Avenue, Suite 1 | Coeur d'Alene, ID 83815
tel (208) 769-1511 | mobile (208) 691-6469 | fax (208) 769-1418
[website](#) | [map](#) | [passport](#)



1965-2015: Helping You Make Lasting, Outdoor Memories for 50 Years



1411 East Mission Avenue
PO Box 3727
Spokane, WA 99220-3727

January 28, 2015

David White
Idaho Department of Parks and Recreation
2885 W Kathleen Avenue, Suite #1
Coeur d'Alene, Idaho 83815

**Subject: Spokane River Project, FERC No. 2545,
Amendment to the Spokane River Project Recreation Plan**

Dear Mr. White:

In 2013, The Federal Energy Regulatory Commission (FERC) issued Avista an Order Modifying and Approving the Amended Recreation Plan for the Spokane River Project, FERC No. 2545. Since that time, Avista has been implementing the Amended Spokane River Recreation Plan (Plan) and has completed several recreation projects in cooperation with local, state and federal agencies.

Due to construction activities at our Post Falls Hydroelectric Development and the inability to draft Coeur d'Alene Lake this winter, Avista has updated the Plan to reflect necessary changes and to demonstrate that many of the previously approved recreation projects have been completed. As such, the Amended Plan includes current information, discussions on recreational improvements for Q'curilt Park in Post Falls, Idaho, and a one year extension of time for the completion of Higgen's Point Shoreline Stabilization Project, which is also located in Idaho.

With this, Avista is submitting the Amended Recreation Plan for your review and comment. We would like to receive any comments or recommendations that you may have by February 28, 2015, which will allow us time to file the Plan with FERC.

Feel free to call me if you have any questions or wish to discuss the Amended Recreation Plan. I can be reached at (509) 495-2919.

Sincerely,

Rebé Wiley
Recreation, Land Use and Cultural Resource Specialist

Mr. White
January 28, 2015
Page 2

Enclosure: Amended Spokane River Recreation Plan

cc: Chris Guidotti, WSPRC
Tom Ernsberger, WSPRC
Brett Walker, WDNR
Karin Divens, WDFW
Jim Teare, IDFG
Ethan Morton, SHPO
Kurt Pindel, USBLM
Jason Flory, USFWS
Susan Colyer, USFS
Mary Farnsworth, USFS
Nick Snyder, KCPW
Dave Fair, PFPRD
Speed Fitzhugh, Avista

Wiley, Rene

From: David White [David.White@idor.idaho.gov]
Sent: Wednesday, January 28, 2015 3:26 PM
To: Wiley, Rene
Subject: RE: Amended Spokane River Recreation Plan

Rene',

Everything looks good. Thanks.



David E. White
North Region Manager
IDPR North Region Service Center
2885 West Kathleen Avenue, Suite 1 | Coeur d'Alene, ID 83815
tel (208) 769-1511 | mobile (208) 691-6469 | fax (208) 769-1418
[website](#) | [map](#) | [passport](#)
   

1965-2015: Helping You Make Lasting, Outdoor Memories for 50 Years

From: Wiley, Rene [<mailto:Rene.Wiley@avistacorp.com>]
Sent: Wednesday, January 28, 2015 3:08 PM
To: David White
Subject: Amended Spokane River Recreation Plan

Good afternoon David,

Due to construction activities at our Post Falls Hydroelectric Development and the inability to draft Coeur d'Alene Lake this winter, Avista has updated the Spokane River and Post Falls Hydroelectric Developments Recreation Plan to reflect necessary changes, and to demonstrate that many of the previously approved recreation projects have been completed. As such, the Amended Plan includes current information, discussions on recreational improvements for Q'emiln Park in Post Falls, Idaho, and a one year extension of time for the completion of Higgen's Point Shoreline Stabilization Project, which is also located in Idaho.

I have enclosed a cover letter along with the Amended Recreation Plan for your review and comment. I would appreciate any comments or recommendations that you may have by February 28, 2015, which will allow time to file the Plan with FERC.

Please feel free to call me if you have any questions or wish to discuss the Amended Recreation Plan. I can be reached at (509) 495-2919.

Sincerely,

Rene Wiley
Recreation, Land Use and Cultural Resource Specialist

1

Idaho Department of Parks and Recreation's (IDPR) Comments and Avista Response

IDPR Comment: Everything looks good. Thanks.

Avista Response: Avista appreciates the positive relationship that we have with the IDPR and look forward to working with them on future projects.



1411 East Mission Avenue
PO Box 3727
Spokane, WA 99220-3727

January 29, 2015

Jim Fredericks
Idaho Department of Fish and Game
2885 W Kathleen Avenue
Coeur d'Alene, Idaho 83815

**Subject: Spokane River Project, FERC No. 2545,
Amendment to the Spokane River Project Recreation Plan**

Dear Mr. Fredericks:

In 2013, The Federal Energy Regulatory Commission (FERC) issued Avista an Order Modifying and Approving the Amended Recreation Plan for the Spokane River Project, FERC No. 2545. Since that time, Avista has been implementing the Amended Spokane River Recreation Plan (Plan) and has completed several recreation projects in cooperation with local, state and federal agencies.

Due to construction activities at our Post Falls Hydroelectric Development and the inability to draft Coeur d'Alene Lake this winter, Avista has updated the Plan to reflect necessary changes and to demonstrate that many of the previously approved recreation projects have been completed. As such, the Amended Plan includes current information, discussions on recreational improvements for Quimlin Park in Post Falls, Idaho, and a one year extension of time for the completion of Higgen's Point Shoreline Stabilization Project, which is also located in Idaho.

With this, Avista is submitting the Amended Recreation Plan for your review and comment. We would like to receive any comments or recommendations that you may have by February 28, 2015, which will allow us time to file the Plan with FERC.

Feel free to call me if you have any questions or wish to discuss the Amended Recreation Plan. I can be reached at (509) 495-2919.

Sincerely,

René Willey
Recreation, Land Use and Cultural Resource Specialist

Mr. Fredericks
January 29, 2015
Page 2

Enclosure: Amended Spokane River Recreation Plan

cc: Chris Guidotti, WSPRC
Tom Ernsberger, WSPRC
Brett Walker, WDNR
Karin Divens, WDFW
David White, IDPR
Ethan Morton, SHPO
Kurt Pindel, USBLM
Jason Flory, USFWS
Susan Colyer, USFS
Mary Farnsworth, USFS
Nick Snyder, KCPW
Dave Fair, PFPRD
Speed Fitzhugh, Avista



IDAHO DEPARTMENT OF FISH AND GAME
PANHANDLE REGION
2885 West Kathleen Avenue
Coeur d'Alene, Idaho 83815

C.L. "Butch" Otter / Governor
Virgil Moore / Director

Rene Wiley
Recreation, Land Use and Cultural Resource Specialist
1411 E. Mission Ave
P.O. Box 3727 MSC-1
Spokane, WA 99220

February 27, 2015

Rene,

Thank you for requesting the Idaho Department of Fish and Game's (IDFG) input on the Amended Spokane River Project Recreation Plan. As you are aware, we have recently completed the IDFG Boating Access Plan (Plan), which addresses boating access on Coeur d'Alene Lake between 2014 and 2019. In reviewing the results from the Plan we have determined that it is not in IDFG's or Avista's best interest to implement improvements at the Round Lake Boat Ramp. The reasons for our decision are due to the remote nature of the site, which is challenging to access during the winter season, low visitation by on- and off-season boaters (including waterfowl hunters), the persistent collection of drift wood at the location of the ramp, and the relatively close location of the Harrison Boat Ramp that you already extended for off-season use.

As you may recall, we requested to reallocate funds to extend the boat launch in 2013, as we were about to complete the above mentioned Plan. At the time, we believed the Round Lake Boat Ramp was going to rank out as our top priority, primarily due to its southern aspect and use by waterfowl hunters, however this was not the case with our overall assessment. Though the site's aspect allows it to be ice free during most winters, boaters choose not to use it because it is too remote and challenging to get to during that season.

With this, we believe that all of the IDFG boat ramps that should be extended for off-season use have been completed. That said, we will complete our next five-year Plan beginning in 2019, which will allow us to reassess our priorities for the next five-year period (2020 to 2025). At that time we will work with Avista and the other recreation management agencies to determine where our efforts would best be utilized per our Off-License Settlement Agreement.

Additionally, we will also work with you to amend our Off-License Settlement Agreement to indicate we are not going to extend the Round Lake Boat Ramp. We would also like to visit with you about other potential options where the funds may be used instead.

Thank you again for your consideration, we look forward to continuing to work with you in the future.

Sincerely,

Jim Fredericks,
Regional Fishery Manager

Keeping Idaho's Wildlife Heritage

Equal Opportunity Employer • 208-314-3760 • Fax: 208-314-3114 • Idaho Fish & Game (IDFG) Service: 1-800-377-3529 •
<http://fishandgame.idaho.gov>

Idaho Department of Fish and Game (IDFG) Comments and Avista Responses

IDFG Comment: As you are aware, we have recently completed the IDFG boating Access Plan (Plan), which addresses boating access on Coeur d'Alene Lake between 2014 and 2019. In reviewing the results of the Plan we have determined this it is not in IDFG's or Avista's best interest to implement improvements at the Round Lake Boat Ramp.

Avista Response: Avista concurs with IDFG's request and has included the changes in the Amended Recreation Plan as appropriate.

IDFG Comment: As you may recall, we requested to reallocate funds to extend the boat launch in 2013, as we were about to complete the above mentioned Plan. At the time, we believed the Round Lake Boat Ramp was going to rank out as our top priority, primarily due to its southern aspect and use by waterfowl hunters, however this was not the case with our overall assessment. Though the site's aspect allows it to be ice free during most winters, boaters choose not to use it because it is too remote and challenging to get to during that season.

With this, we believe that all of the IDFG boat ramps that should be extended for off-season use have been completed. That said, we will complete our next five-year period (2020 to 2015). At that time we will work with Avista and other recreation management agencies to determine where our efforts would best be utilized per our Off-License Settlement Agreement.

Avista Response: Avista concurs with IDFG's assessment of the Round Lake Boat Ramp usage and decision, and looks forward to working with them in the future under our Off-License Settlement Agreement.



1411 East Mission Avenue
PO Box 3727
Spokane, WA 99220-3727

January 28, 2015

Dave Fair
Post Falls Parks and Recreation
408 N Spokane St.
Post Falls Idaho 83854

**Subject: Spokane River Project, FERC No. 2545,
Amendment to the Spokane River Project Recreation Plan**

Dear Mr. Fair:

In 2013, The Federal Energy Regulatory Commission (FERC) issued Avista an Order Modifying and Approving the Amended Recreation Plan for the Spokane River Project, FERC No. 2545. Since that time, Avista has been implementing the Amended Spokane River Recreation Plan (Plan) and has completed several recreation projects in cooperation with local, state and federal agencies.

Due to construction activities at our Post Falls Hydroelectric Development and the inability to draft Coeur d'Alene Lake this winter, Avista has updated the Plan to reflect necessary changes and to demonstrate that many of the previously approved recreation projects have been completed. As such, the Amended Plan includes current information, discussions on recreational improvements for Q'emlin Park in Post Falls, Idaho, and a one year extension of time for the completion of Higgen's Point Shoreline Stabilization Project, which is also located in Idaho.

With this, Avista is submitting the Amended Recreation Plan for your review and comment. We would like to receive any comments or recommendations that you may have by February 28, 2015, which will allow us time to file the Plan with FERC.

Feel free to call me if you have any questions or wish to discuss the Amended Recreation Plan. I can be reached at (509) 495-2919.

Sincerely,

René Wiley
Recreation, Land Use and Cultural Resource Specialist

Mr. Fair
January 28, 2015
Page 2

Enclosure: Amended Spokane River Recreation Plan

cc: Chris Guidotti, WSPRC
Tom Ernsberger, WSPRC
Brett Walker, WDNR
Karin Divens, WDFW
Jim Teare, IDFG
David White, IDPR
Ethan Morton, SHPO
Kurt Pindel, USBLM
Jason Flory, USFWS
Susan Colyer, USFS
Mary Farnsworth, USFS
Nick Snyder, KCPW
Speed Fitzhugh, Avista



March 3, 2015

Rene Wiley, Recreation, Land Use and Cultural Resource Specialist
Avista Corporation
1411 e. Mission Street
PO Box 3727 MSC-1
Spokane, WA 99220

RE Amended Recreation Plan 1-28-15

Dear Rene,

Thank you for the opportunity to comment on the Amended Recreation Plan 1-28-15. With Q'emiln Park we manage within the plan we are very interested in any and all plans that impact this valuable site. As we both know, Q'emiln Park is one of the highest used parks on the Spokane River.

Many items have not changed and several changes appear to be good. I will not address those items, but will focus on those items that I believe needs more information and or I have concerns on.

The current plan does not address the rehabilitation of the whole staging area. A larger area has been impacted then what appears to be slated for landscaping. We were told prior to the start of this project that the site would be brought back to a natural state.

For those areas that will be re-vegetated I would like to see imported soil brought on at a depth that is appropriate for the selected plants, shrubs and trees.

I recognize that we have had a few meetings over the last few months related to the proposed overlook and crane pad. I understand Avista's thoughts on this but I still have concerns. The path to the overlook will be much larger than I thought and I would like further consideration on reducing the width of the roadway with no additional clearing/widening. The visual impact of this site is critical to the positive experience of the park for our users.

The difference in pad and overlook height is still a concern but with proper rails, stairs and or ramps to address public safety and access. That issue will be addressed when the design is completed.

Thank you for allowing me the opportunity to comment on this plan.
Respectfully,

David C. Fair, Director of Parks and Recreation

408 N. Spokane Street, Post Falls, ID 83854 • tel (208)773-0539 • fax (208)773-7658 • www.postfallsidaho.org

City of Post Falls Parks and Recreation Department (PFPRD) Comments and Avista Responses

The following PRPRD's comments refer to Avista's mitigation plan for the Post Falls South Channel Dam Spillway Gate Replacement Project.

PFPRD Comment: The current plan does not address the rehabilitation of the whole staging area. A larger area has been impacted than what appears to be slated for landscaping. We were told prior to the start of this project that the site would be brought back to a natural state.

Avista Response: Per the PFPRD's request, Avista revised the design plan to include the rehabilitation of construction staging areas. Avista met with the Director of Parks and Recreation on April 3, 2015, who reviewed and approved the revised site plan. The updated site plan is included on page C-3.

PFPRD Comment: For those areas that will be re-vegetated I would like to see imported soil brought on at a depth that is appropriate for the selected plants, shrubs and trees.

Avista Response: Avista revised the design plan to include imported soils to accommodate the selected plants, shrubs and trees.

PFPRD Comment: The path to the overlook will be much larger than I thought and I would like further consideration on reducing the width of the roadway with no additional clearing/widening. The visual impact of this site is critical to the positive experience of the park for our users.

Avista Response: Avista concurs with the PFPRD's comment and has included changes in the Overlook and Crane Pad site plan to reduce the roadway width from 16' to 12', and has incorporated additional landscaping to soften the appearance of the maintenance road.

PFPRD Comment: The difference in pad and overlook height is still a concern but with proper rails, stairs and or ramps to address public safety and access. That issue will be addressed when the design is completed.

Avista Response: Avista revised the site plan to combine the Overlook and Crane Pad into one feature, so they are the same elevation.



1411 East Mission Avenue
PO Box 3727
Spokane, WA 99270-3727

January 28, 2015

Jason Flory
Fish and Wildlife Biologist
U.S. Fish & Wildlife Service
11103 E. Montgomery Drive
Spokane Valley, WA 99206

**Subject: Spokane River Project, FERC No. 2545,
Amendment to the Spokane River Project Recreation Plan**

Dear Mr. Flory:

In 2013, The Federal Energy Regulatory Commission (FERC) issued Avista an Order Modifying and Approving the Amended Recreation Plan for the Spokane River Project, FERC No. 2545. Since that time, Avista has been implementing the Amended Spokane River Recreation Plan (Plan) and has completed several recreation projects in cooperation with local, state and federal agencies.

Due to construction activities at our Post Falls Hydroelectric Development and the inability to draft Coeur d'Alene Lake this winter, Avista has updated the Plan to reflect necessary changes and to demonstrate that many of the previously approved recreation projects have been completed. As such, the Amended Plan includes current information, discussions on recreational improvements for Q'emilm Park in Post Falls, Idaho, and a one year extension of time for the completion of Higgen's Point Shoreline Stabilization Project, which is also located in Idaho.

With this, Avista is submitting the Amended Recreation Plan for your review and comment. We would like to receive any comments or recommendations that you may have by February 28, 2015, which will allow us time to file the Plan with FERC.

Feel free to call me if you have any questions or wish to discuss the Amended Recreation Plan. I can be reached at (509) 495-2919.

Sincerely,

René Wiley
Recreation, Land Use and Cultural Resource Specialist

Mr. Flory
January 28, 2015
Page 2

Enclosure: Amended Spokane River Recreation Plan

cc: Chris Guidotti, WSPRC
Tom Ernsberger, WSPRC
Brett Walker, WDNR
Karin Divens, WDFW
Jim Teare, IDFG
David White, IDPR
Ethan Morton, SHPO
Kurt Pindel, USBLM
Susan Colyer, USFS
Mary Farnsworth, USFS
Nick Snyder, KCPW
Dave Fair, PFPRD
Speed Fitzhugh, Avista

Wiley, Rene

From: Flory, Jason [jason_flory@fws.gov]
Sent: Friday, February 27, 2015 9:08 AM
To: Wiley, Rene
Cc: Erin BrittonKuttel; Ben Conrad
Subject: Re: Amended Spokane River Recreation Plan

Rene,

Thanks for sending the Recreation Plan and allowing the Service to review it. After reviewing the document, the Service recommends that Avista work with IDFG and WDFW to include bull trout and redband trout identification signs with the other planned interpretive signs along trails and at fishing areas.

If you have any questions, feel free to give me a call.

On Wed, Jan 28, 2015 at 3:17 PM, Wiley, Rene <Rene.Wiley@avistacorp.com> wrote:

Good afternoon Jason,

Due to construction activities at our Post Falls Hydroelectric Development and the inability to draft Cour d'Alene Lake this winter, Avista has updated the Spokane River and Post Falls Hydroelectric Developments Recreation Plan to reflect necessary changes, and to demonstrate that many of the previously approved recreation projects have been completed. As such, the Amended Plan includes current information, discussions on recreational improvements for Q'emaln Park in Post Falls, Idaho, and a one year extension of time for the completion of Higgen's Point Shoreline Stabilization Project, which is also located in Idaho.

I have enclosed a cover letter along with the Amended Recreation Plan for your review and comment. I would appreciate any comments or recommendations that you may have by February 28, 2015, which will allow time to file the Plan with FERC.

Please feel free to call me if you have any questions or wish to discuss the Amended Recreation Plan. I can be reached at (509) 495-2919.

Sincerely,

Rene

U.S. Fish and Wildlife Service (USFWS) Comments and Avista Response

USFWS Comment: After reviewing the document, the Service recommends that Avista work with IDFG and WDFW to include bull trout and redband trout identification signs with the other planned interpretive signs along trails and at fishing areas.

Avista Response: Avista has been implementing two Information and Outreach Programs since 2010 that include fisheries specific information. These include:

The Coeur d'Alene Lake Fisheries Public Education and Outreach Program, which includes bull trout signs near Coeur d'Alene Lake, the St. Joe, St. Maries and Coeur d'Alene Rivers.

The Spokane River Wild Rainbow Trout Public Education and Outreach Plan, which includes redband trout identification signs, at locations specified by WDFW.



February 26, 2015

Ethan Morton
Idaho State Historic Preservation Office
210 Main Street
Bosch, Idaho 83702

**Subject: Spokane River Project, FERC No. 2545,
Amendment to the Spokane River Project Recreation Plan**

Dear Mr. Morton:

In 2013, The Federal Energy Regulatory Commission (FERC) issued Avista an Order Modifying and Approving the Amended Recreation Plan for the Spokane River Project, FERC No. 2545. Since that time, Avista has been implementing the Amended Spokane River Recreation Plan (Plan) and has completed several recreation projects in cooperation with local, state and federal agencies.

Due to construction activities at our Post Falls Hydroelectric Development and the inability to draft Coeur d'Alene Lake this winter, Avista has updated the Plan to reflect necessary changes and to demonstrate that many of the previously approved recreation projects have been completed. As such, the Amended Plan includes current information, discussions on recreational improvements for Q'emiln Park in Post Falls, Idaho, and a one year extension of time for the completion of Higgen's Point Shoreline Stabilization Project, which is also located in Idaho.

With this, Avista is submitting the Amended Recreation Plan for your review and comment. I am requesting an expedited review, which will allow us time to file the Plan with FERC and construct the projects in 2015.

Feel free to call me if you have any questions or wish to discuss the Amended Recreation Plan. I can be reached at (509) 495-2919.

Sincerely,

A handwritten signature in blue ink that reads "René Wiley". The signature is written in a cursive, flowing style.

René Wiley
Recreation, Land Use and Cultural Resource Specialist
Enclosure: Amended Spokane River Recreation Plan

Mr. Morton
February 26, 2015
Page 2

cc: Chris Guidotti, WSPRC
Tom Ernsberger, WSPRC
Karin Divens, WDFW
Jim Teare, IDFG
David White, IDPR
Kurt Pindel, USBLM
Brett Walker, WDNR
Jason Flory, USFWS
Susan Colyer, USFS
Mary Farnsworth, USFS
Nick Snyder, KCPW
Dave Fair, PFPRD
Speed Fitzhugh, Avista



C.L. "Butch" Otter
Governor of Idaho

March 2, 2015

Janet Gallimore
Executive Director

Ms. Rene' Wiley
Recreation, Land Use, and Cultural Resource Specialist
Avista

Administration
2205 Old Penitentiary Road
Boise, Idaho 83712-8250
Office: (208) 334-2682
Fax: (208) 334-2774

1411 East Mission Avenue
PO Box 3727
Spokane, WA 99220-3727

Membership and Fund
Development
2205 Old Penitentiary Road
Boise, Idaho 83712-8250
Office: (208) 514-2310
Fax: (208) 334-2774

RE: Amendment to the Spokane River and Post Falls Hydroelectric Developments
Recreation Plan (FERC #2545)

Dear Ms. Wiley,

Historical Museum and
Education Programs
610 North Julia Davis Drive
Boise, Idaho 83702-7695
Office: (208) 334-2120
Fax: (208) 334-4059

Thank you for your informational letter and project materials regarding the amendment to the Spokane River Project Recreation Plan. We would also like to thank you for speaking with me on the 27th of February.

State Historic Preservation
Office and Historic Sites
Archaeological Survey of Idaho
210 Main Street
Boise, Idaho 83702-7264
Office: (208) 334-3861
Fax: (208) 334-2775 a

We have reviewed the amended recreation plan and do not have major concerns. As you know we are consulting with Avista separately regarding the proposed recreational developments (Q'emiln Park) as part of the overall construction at the Post Falls Hydroelectric Facility (Idaho SHPO REV 2014-312) and have completed consultation regarding the Trailer Park Wave Access (Idaho SHPO REV 2014-1124).

Statewide Sites:
• Franklin Historic Site
• Pierce Courthouse
• Rock Creek Station and
• Stricker Homesite

We have not received consultation regarding the Higgins Point Launch and Day Use Area and the associated Shoreline Stabilization and Dock Reconstruction. We understand that Avista will be consulting with our office directly regarding this project as it becomes feasible due to impoundment conditions. We also understand that Higgins Point is currently managed as a semi-developed recreational facility by Idaho Parks and Recreation the majority of which is outside of the FERC License Boundary. As I expressed to you during our conversation we do have some concerns regarding any new ground disturbance at Higgins Point as it may be the location of a poorly documented archaeological site. You expressed that Idaho Parks and Recreation typically consults directly with our office if a federal nexus is identified. We look forward to further consultation with Avista and Idaho parks and Recreation regarding this undertaking.

Old Penitentiary
2445 Old Penitentiary Road
Boise, Idaho 83712-8254
Office: (208) 334-2844
Fax: (208) 334-3225

We appreciate your consulting with our office. If you have any questions feel free to contact me at 208-334-3847 x107 or ethan.morton@ishs.idaho.gov.

Idaho State Archives
2205 Old Penitentiary Road
Boise, Idaho 83712-8250
Office: (208) 334-2620
Fax: (208) 334-2626

Sincerely,

North Idaho Office
112 West 4th Street, Suite #7
Moscow, Idaho 83843
Office: (208) 882-1540
Fax: (208) 882-1763

Ethan Morton, Idaho State Historic Preservation Office.

cc David White, Northern Region Manager, Idaho State Parks and Recreation



Historical Society is an
Equal Opportunity Employer.

Idaho State Historic Preservation Office (SHPO) Comments and Avista Response

SHPO Comment: We have not received consultation regarding the Higgen's Point Launch and Day Use Area and the associated Shoreline Stabilization and Dock Reconstruction. We understand that Avista will be consulting with our office directly regarding this project as it becomes feasible due to impoundment conditions. We also understand that Higgen's Point is currently managed as a semi-developed recreational facility by Idaho Parks and Recreation the majority of which is outside of the FERC License Boundary. As I expressed to you during our conversation we do have some concerns regarding any new ground disturbance at Higgen's Point as it may be the location of a poorly documented archaeological site. You expressed that Idaho Parks and Recreation typically consults directly with our office if a federal nexus is identified. We look forward to further consultation with Avista and Idaho parks and Recreation regarding this undertaking.

Avista Response: In response to the SHPO's concerns, Avista coordinated consultation with IDPR and SHPO for the Higgen's Point Shoreline Stabilization Project. Additional consultation between IDPR's contractor and the SHPO is included in the following pages. The SHPO determined the project will have no effect on historic properties.

March 10, 2015

Ethan Morton
Idaho State Historical Society
210 Main Street
Boise, ID 83702

Re: Higgins Point Boat Launch Stabilization – Request for Comments

Dear Ethan Morton:

The Idaho Department of Parks and Recreation (IDPR) is preparing to conduct shoreline stabilization along the northeast shoreline of Coeur d'Alene Lake. The project is being administered by IDPR and being funded by Avista Utilities through the Spokane River and Post Falls Hydroelectric Developments Recreation Plan (FERC #2545).

PROPOSED PROJECT

The proposed project consists of reconstruction of up to approximately 600 lineal feet of shoreline along Lake Coeur d'Alene. The project will include, reestablishing existing material to a slope of approximately 1.5 horizontal to 1 vertical, haul-off of approximately 575 cubic yards of existing material, placement of geotextile fabric and 1,815 cubic yards of Class III riprap along with placement of approximately 15 cubic yards of 1 inch minus crushed aggregate along the edge of the Centennial Trail.

PROJECT NEED

The purpose of this project is to stabilize approximately 575 lineal feet of shoreline located along E. Coeur D'Alene Lake Dr. The shoreline has deteriorated from wave and weather conditions. Sections of the Centennial Trail (walking and biking path) are in jeopardy of collapsing into the lake if measures of securing the shoreline bank are not taken.

PROJECT LOCATION INFORMATION

It should be noted that the shoreline stabilization will be conducted on what is considered previously disturbed ground. According to the Idaho Transportation Department (ITD), E. Coeur d'Alene Lake Drive was constructed in the late 1940's and consists of fill that was generated from proposed cuts within the roadway corridor.

REVIEW MATERIALS

Enclosed is a map of the proposed project area that depict the proposed improvements.

We request that you advise us of any comments that you may have regarding this project, so that IDPR may proceed with the completion of the design documents. If you have any questions concerning this proposed project or if you need any further information, please feel free to contact me at Welch Comer & Associates, Inc. at (208) 664-9382 at your convenience.

Sincerely,

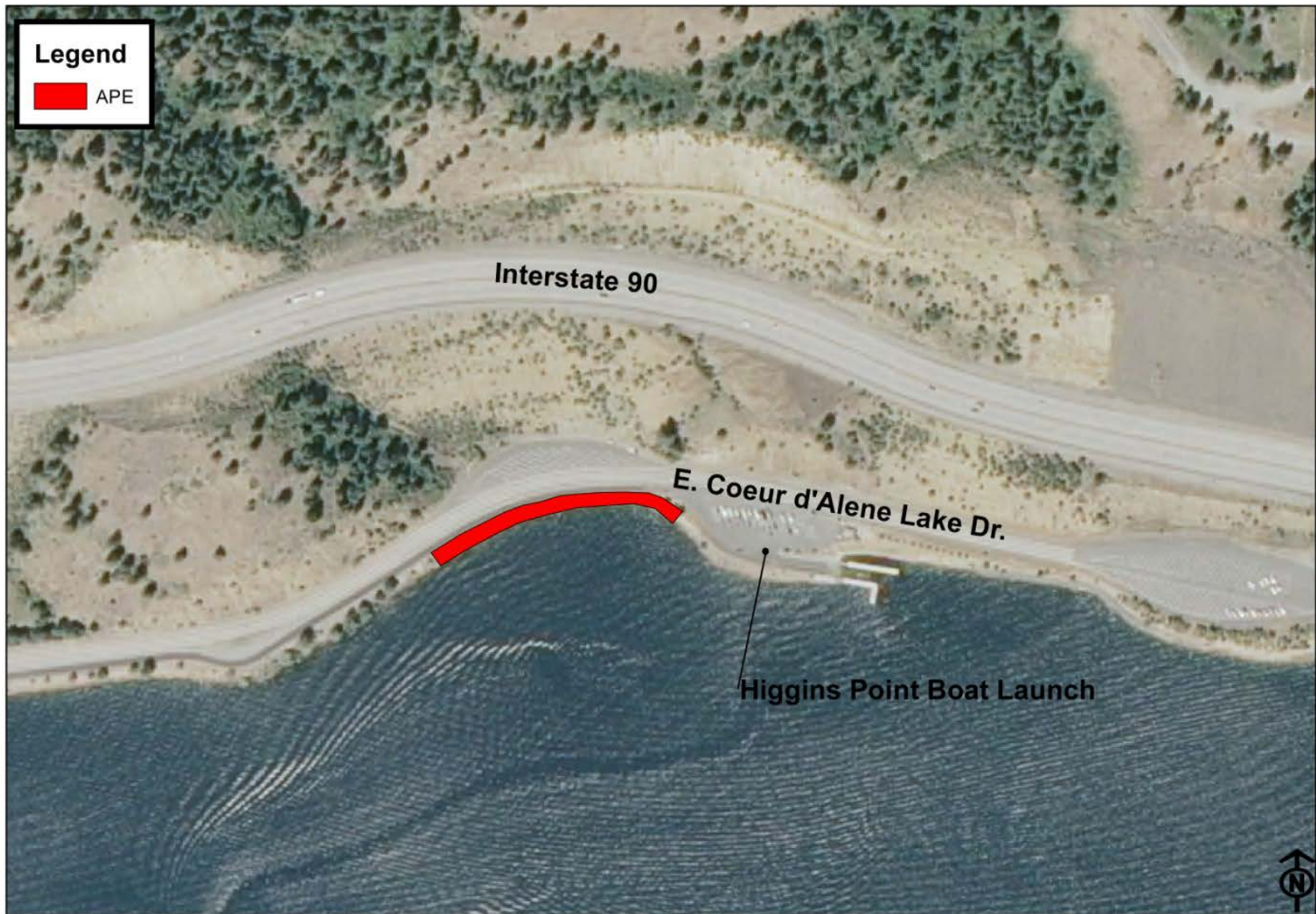


Casey R. Walton, E.I.T.
Staff Engineer

CRW/lms

Enclosure

cc: David White – Idaho Department of Parks and Recreation
Rene Wiley – Avista Utilities

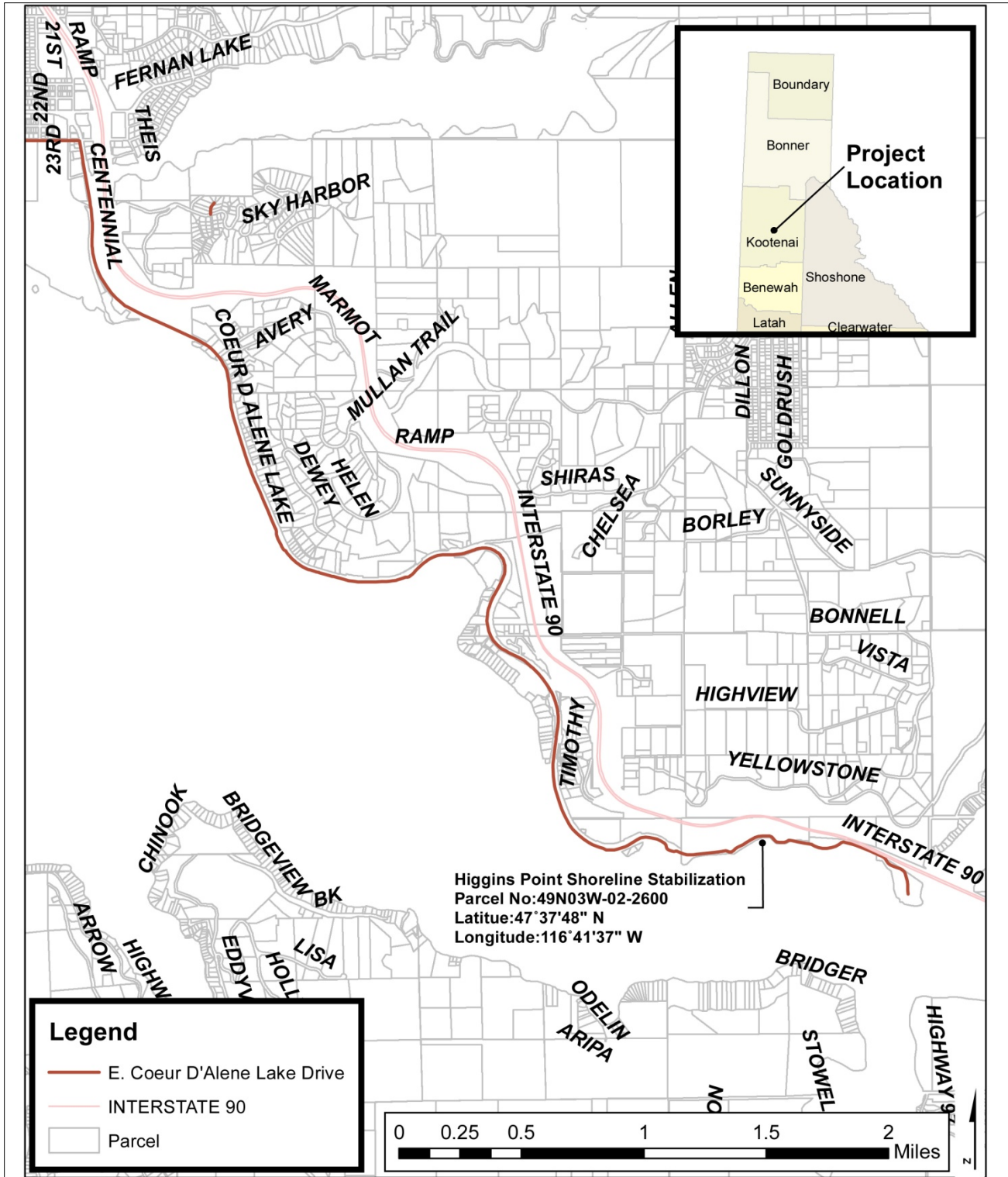


WELCH-COMER
 ENGINEERS | SURVEYORS
 www.welchcomer.com 208-664-9382

COPYRIGHT 2015
 Welch-Comer & Associates, Inc.
 This document, and ideas and designs incorporated herein, as an instrument of professional service,
 is the property of Welch-Comer & Associates, Inc., and is not to be used in whole or in part for any
 other project without the written authorization of Welch-Comer & Associates, Inc.

Idaho Department of Parks and Recreation
 Higgins Point Shoreline Stabilization

Sources:
 Kootenai County GIS Department
 PROJECT NO.....41160
 DRAWN BY.....=CW
 FILENAME.....APEMap
 DATE.....3/8/2015



WELCH-COMER
ENGINEERS | SURVEYORS

www.welchcomer.com 208-664-9382
350 E. Kathleen Ave. (toll free) 877-815-5672
Coeur d'Alene, ID 83815 (fax) 208-664-5946

Higgins Point Shoreline Stabilization

Vicinity Map

Sources:
Kootenai County GIS Department
Idaho Transportation Department

PROJECT NO. 41160
DRAWN BY CW
FILENAME VicinityMap
DATE 2/24/2014



C.L. "Butch" Otter
Governor of Idaho

March 16, 2015

Janet Gallimore
Executive Director

Mr. Casey R. Walton
Staff Engineer
Welch Comer
350 E. Kathleen Avenue
Coeur d'Alene, ID 83815

Administration
2205 Old Penitentiary Road
Boise, Idaho 83712-8250
Office: (208) 334-2682
Fax: (208) 334-2774

RE: Higgins Point Boat Launch Stabilization (Idaho SHPO REV 2015-43/2015-385)

Membership and Fund
Development
2205 Old Penitentiary Road
Boise, Idaho 83712-8250
Office: (208) 514-2310
Fax: (208) 334-2774

Dear Mr. Walton,

Historical Museum and
Education Programs
610 North Julia Davis Drive
Boise, Idaho 83702-7695
Office: (208) 334-2120
Fax: (208) 334-4059

Thank you for your informational letter and project materials clarifying the scope of the proposed undertaking. We have reviewed the area of potential effect for the proposed bank stabilization and recommend that the undertaking will have no effect on *historic properties* (36 CFR 800.4). This fulfills Avista's (FERC's) or any other federal authority's consultation responsibilities with the Idaho State Historic Preservation under Section 106 of the National Historic Preservation Office for the proposed undertaking

State Historic Preservation
Office and Historic Sites
Archaeological Survey of Idaho
210 Main Street
Boise, Idaho 83702-7254
Office: (208) 334-3861
Fax: (208) 334-2775

We appreciate your consulting with our office. If you have any questions feel free to contact me at 208-334-3847 x107 or ethan.morton@ishs.idaho.gov.

Statewide Sites:
• Franklin Historic Site
• Pierce Courthouse
• Rock Creek Station and
• Stricker Homestead

Sincerely,

Old Penitentiary
2445 Old Penitentiary Road
Boise, Idaho 83712-8254
Office: (208) 334-2844
Fax: (208) 334-3225

Ethan Morton, State Historic Preservation Office

Idaho State Archives
2205 Old Penitentiary Road
Boise, Idaho 83712-8250
Office: (208) 334-2620
Fax: (208) 334-2626

Cc: David White-Idaho Department of Parks and Recreation
Rene Wiley-Avista Utilities

North Idaho Office
112 West 4th Street, Suite #7
Moscow, Idaho 83843
Office: (208) 882-1540
Fax: (208) 882-1763



Historical Society is an
Equal Opportunity Employer.



January 28, 2015

Tom Finsberger
Washington State Parks and Recreation Commission
Eastern Region Headquarters
270 9th Street N.E., Suite 200
East Wenatchee, WA 98802

**Subject: Spokane River Project, FERC No. 2545,
Amendment to the Spokane River Project Recreation Plan**

Dear Mr. Finsberger:

In 2013, The Federal Energy Regulatory Commission (FERC) issued Avista an Order Modifying and Approving the Amended Recreation Plan for the Spokane River Project, FERC No. 2545. Since that time, Avista has been implementing the Amended Spokane River Recreation Plan (Plan) and has completed several recreation projects in cooperation with local, state and federal agencies.

Due to construction activities at our Post Falls Hydroelectric Development and the inability to draft Coeur d'Alene Lake this winter, Avista has updated the Plan to reflect necessary changes and to demonstrate that many of the previously approved recreation projects have been completed. As such, the Amended Plan includes current information, discussions on recreational improvements for Q'emih Park in Post Falls, Idaho, and a one year extension of time for the completion of Higgen's Point Shoreline Stabilization Project, which is also located in Idaho.

With this, Avista is submitting the Amended Recreation Plan for your review and comment. We would like to receive any comments or recommendations that you may have by February 28, 2015, which will allow us time to file the Plan with FERC.

Feel free to call me if you have any questions or wish to discuss the Amended Recreation Plan. I can be reached at (509) 495-2919.

Sincerely,


Rene Wiley
Recreation, Land Use and Cultural Resource Specialist

Mr. Ernsberger
January 28, 2015
Page 2

Enclosure: Amended Spokane River Recreation Plan

cc: Chris Guidotti, WSPRC
Karin Divens, WDFW
Brett Walker, WDNR
Jim Teare, IDFG
David White, IDPR
Ethan Morton, SHPO
Kurt Pindel, USBLM
Jason Flory, USFWS
Susan Colyer, USFS
Mary Farnsworth, USFS
Nick Snyder, KCPW
Dave Fair, PFPRD
Speed Fitzhugh, Avista

Wiley, Rene

From: Ernsberger, Tom (PARKS) [Tom.Ernsberger@PARKS.WA.GOV]
Sent: Tuesday, March 03, 2015 11:05 AM
To: Wiley, Rene
Cc: Guidotti, Chris (PARKS)
Subject: RE: Amended Spokane River Recreation Plan

Sorry I am late but I wanted to let you know the plan looks fine from my perspective. I did have one question regarding the camp area assessment. I am assuming you will need at least a letter or some document from us to identify the determination under section 5.3.1 paragraph 1. If a more detailed document is required, work with Chris and Brian Patnode.

Thomas W Ernsberger
Region Manager, Northeast Washington
270 9th St NE Suite 200
East Wenatchee, WA 98802
509-665-4313 FAX 509-886-6232

From: Wiley, Rene [mailto:Rene.Wiley@avistacorp.com]
Sent: Wednesday, January 28, 2015 3:22 PM
To: Ernsberger, Tom (PARKS)
Cc: Guidotti, Chris (PARKS)
Subject: Amended Spokane River Recreation Plan

Good afternoon Tom,

Due to construction activities at our Post Falls Hydroelectric Development and the inability to draft Coeur d'Alene Lake this winter, Avista has updated the Spokane River and Post Falls Hydroelectric Developments Recreation Plan to reflect necessary changes, and to demonstrate that many of the previously approved recreation projects have been completed. As such, the Amended Plan includes current information, discussions on recreational improvements for Q'emlin Park in Post Falls, Idaho, and a one year extension of time for the completion of Higger's Point Shoreline Stabilization Project, which is also located in Idaho.

I have enclosed a cover letter along with the Amended Recreation Plan for your review and comment. I would appreciate any comments or recommendations that you may have by February 28, 2015, which will allow time to file the Plan with FERC.

Please feel free to call me if you have any questions or wish to discuss the Amended Recreation Plan. I can be reached at (509) 495-2919.

Sincerely,

René

*René Wiley
Recreation, Land Use and Cultural Resource Specialist
1411 E. Mission Ave
P.O. Box 3727 MSC-1
Spokane, WA 99220*

1

Washington State Parks and Recreation Commission (WSP) Comments and Avista Response

WSP Comment: I wanted to let you know the plan looks fine from my perspective. I did have one question regarding the camp area assessment. I am assuming you will need at least a letter or some document from us to identify the determination under section 5.3.1 paragraph 1. If a more detailed document is required, work with Chris and Brian Patnode.

Avista Response: Avista looks forward to working with WSP to identify alternate recreation site locations for development on Lake Spokane, and on the completion of the Assessment Report.

The following agencies did not provide comments to the Amended Plan:

- Washington Department of Natural Resources,
- Washington Department of Fish and Wildlife,
- U.S. Forest Service; and
- U.S. Bureau of Land Management.



1411 East Mission Avenue
PO Box 3727
Spokane, WA 99220-3727

January 28, 2015

Brett Walker
Department of Natural Resources
Northeast Region
225 S Silke Road
Colville, WA 99114-0190

**Subject: Spokane River Project, FERC No. 2545,
Amendment to the Spokane River Project Recreation Plan**

Dear Mr. Walker:

In 2013, The Federal Energy Regulatory Commission (FERC) issued Avista an Order Modifying and Approving the Amended Recreation Plan for the Spokane River Project, FERC No. 2545. Since that time, Avista has been implementing the Amended Spokane River Recreation Plan (Plan) and has completed several recreation projects in cooperation with local, state and federal agencies.

Due to construction activities at our Post Falls Hydroelectric Development and the inability to draft Coeur d'Alene Lake this winter, Avista has updated the Plan to reflect necessary changes and to demonstrate that many of the previously approved recreation projects have been completed. As such, the Amended Plan includes current information, discussions on recreational improvements for Q'emiln Park in Post Falls, Idaho, and a one year extension of time for the completion of Higger's Point Shoreline Stabilization Project, which is also located in Idaho.

With this, Avista is submitting the Amended Recreation Plan for your review and comment. We would like to receive any comments or recommendations that you may have by February 28, 2015, which will allow us time to file the Plan with FERC.

Feel free to call me if you have any questions or wish to discuss the Amended Recreation Plan. I can be reached at (509) 495-2919.

Sincerely,

René Wilcy
Recreation, Land Use and Cultural Resource Specialist

Mr. Walker
January 28, 2015
Page 2

Enclosure: Amended Spokane River Recreation Plan

cc: Chris Guidotti, WSPRC
Tom Ernsberger, WSPRC
Karin Divens, WDFW
Jim Teare, IDFG
David White, IDPR
Ethan Morton, SHPO
Kurt Pindel, USBLM
Jason Flory, USFWS
Susan Colyer, USFS
Mary Farnsworth, USFS
Nick Snyder, KCPW
Dave Fair, PFPRD
Speed Fitzhugh, Avista



1411 East Mission Avenue
PO Box 3727
Spokane, WA 99220-3727

January 28, 2015

Karin Divens
Washington Department of Fish and Wildlife
2315 N. Discovery Place
Spokane Valley, WA 99260

**Subject: Spokane River Project, FERC No. 2545,
Amendment to the Spokane River Project Recreation Plan**

Dear Mrs. Divens:

In 2013, The Federal Energy Regulatory Commission (FERC) issued Avista an Order Modifying and Approving the Amended Recreation Plan for the Spokane River Project, FERC No. 2545. Since that time, Avista has been implementing the Amended Spokane River Recreation Plan (Plan) and has completed several recreation projects in cooperation with local, state and federal agencies.

Due to construction activities at our Post Falls Hydroelectric Development and the inability to draft Coeur d'Alene Lake this winter, Avista has updated the Plan to reflect necessary changes and to demonstrate that many of the previously approved recreation projects have been completed. As such, the Amended Plan includes current information, discussions on recreational improvements for Queenin Park in Post Falls, Idaho, and a one year extension of time for the completion of Higgen's Point Shoreline Stabilization Project, which is also located in Idaho.

With this, Avista is submitting the Amended Recreation Plan for your review and comment. We would like to receive any comments or recommendations that you may have by February 28, 2015, which will allow us time to file the Plan with FERC.

Feel free to call me if you have any questions or wish to discuss the Amended Recreation Plan. I can be reached at (509) 495-2919.

Sincerely,

René Wiley
Recreation, Land Use and Cultural Resource Specialist

Mrs. Divens
January 28, 2015
Page 2

Enclosure: Amended Spokane River Recreation Plan

cc: Chris Guidotti, WSPRC
Tom Ernsberger, WSPRC
Brett Walker, WDNR
Jim Teare, IDFG
David White, IDPR
Ethan Morton, SHPO
Kurt Pindel, USBLM
Jason Flory, USFWS
Susan Colyer, USFS
Mary Farnsworth, USFS
Nick Snyder, KCPW
Dave Fair, PFPRD
Speed Fitzhugh, Avista



1411 East Mission Avenue
PO Box 3727
Spokane, WA 99220-3727

January 28, 2015

Susan Colyer
U.S. Forest Service
Forest Supervisors Office
3815 Schreiber Way
Coeur d'Alene, ID 83815-8363

**Subject: Spokane River Project, FERC No. 2545,
Amendment to the Spokane River Project Recreation Plan**

Dear Ms. Colyer:

In 2013, The Federal Energy Regulatory Commission (FERC) issued Avista an Order Modifying and Approving the Amended Recreation Plan for the Spokane River Project, FERC No. 2545. Since that time, Avista has been implementing the Amended Spokane River Recreation Plan (Plan) and has completed several recreation projects in cooperation with local, state and federal agencies.

Due to construction activities at our Post Falls Hydroelectric Development and the inability to draft Coeur d'Alene Lake this winter, Avista has updated the Plan to reflect necessary changes and to demonstrate that many of the previously approved recreation projects have been completed. As such, the Amended Plan includes current information, discussions on recreational improvements for Queenin Park in Post Falls, Idaho, and a one year extension of time for the completion of Higgen's Point Shoreline Stabilization Project, which is also located in Idaho.

With this, Avista is submitting the Amended Recreation Plan for your review and comment. We would like to receive any comments or recommendations that you may have by February 28, 2015, which will allow us time to file the Plan with FERC.

Feel free to call me if you have any questions or wish to discuss the Amended Recreation Plan. I can be reached at (509) 495-2919.

Sincerely,

Rene Wilcy
Recreation, Land Use and Cultural Resource Specialist

Ms. Colyer
January 28, 2015
Page 2

Enclosure: Amended Spokane River Recreation Plan

cc: Chris Guidotti, WSPRC
Tom Ernsberger, WSPRC
Brett Walker, WDNR
Karin Divens, WDFW
Jim Teare, IDFG
David White, IDPR
Ethan Morton, SHPO
Kurt Pindel, USBLM
Jason Flory, USFWS
Nick Snyder, KCPW
Dave Fair, PFPRD
Mary Farnsworth, USFS
Speed Fitzhugh, Avista



1411 East Mission Avenue
PO Box 3727
Spokane, WA 99220-3727

January 28, 2015

Kurt Pindel
U.S. Bureau of Land Management
3815 Schroeder Way
Coeur d'Alene, Idaho 83815

**Subject: Spokane River Project, FERC No. 2545,
Amendment to the Spokane River Project Recreation Plan**

Dear Mr. Pindel:

In 2013, The Federal Energy Regulatory Commission (FERC) issued Avista an Order Modifying and Approving the Amended Recreation Plan for the Spokane River Project, FERC No. 2545. Since that time, Avista has been implementing the Amended Spokane River Recreation Plan (Plan) and has completed several recreation projects in cooperation with local, state and federal agencies.

Due to construction activities at our Post Falls Hydroelectric Development and the inability to draft Coeur d'Alene Lake this winter, Avista has updated the Plan to reflect necessary changes and to demonstrate that many of the previously approved recreation projects have been completed. As such, the Amended Plan includes current information, discussions on recreational improvements for Queenin Park in Post Falls, Idaho, and a one year extension of time for the completion of Higgen's Point Shoreline Stabilization Project, which is also located in Idaho.

With this, Avista is submitting the Amended Recreation Plan for your review and comment. We would like to receive any comments or recommendations that you may have by February 28, 2015, which will allow us time to file the Plan with FERC.

Feel free to call me if you have any questions or wish to discuss the Amended Recreation Plan. I can be reached at (509) 495-2919.

Sincerely,

Robé Wiley
Recreation, Land Use and Cultural Resource Specialist

Mr. Pindel
January 28, 2015
Page 2

Enclosure: Amended Spokane River Recreation Plan

cc: Chris Guidotti, WSPRC
Tom Ernsberger, WSPRC
Karin Divens, WDFW
Jim Teare, IDFG
David White, IDPR
Ethan Morton, SHPO
Brett Walker, WDNR
Jason Flory, USFWS
Susan Colyer, USFS
Mary Farnsworth, USFS
Nick Snyder, KCPW
Dave Fair, PFPRD
Speed Fitzhugh, Avista