



# Equity Advisory Group

*Looking upstream: Root causes of barriers to equity*

February 2024



# Introductions & Agenda

Topic	Topic Owner
Welcome & Introductions	Amber Lenhart
Overview of the Meeting: Rules and Intent	Amber Lenhart
Partner Shares	Amber Lenhart
Root Cause Discussion	Amber Lenhart / Annette Brandon
Wrap-up	Amber Lenhart

# Guest Introductions

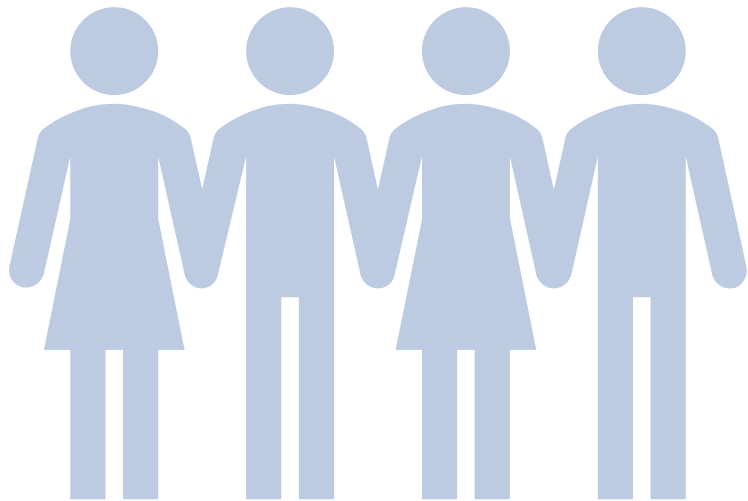
- Name
- Pronouns
- Organization or community



# Today's Meeting

## Equity Lens Session February 2024

### Energy Equity in Utility Operations



INCREASING LEVEL OF PUBLIC IMPACT				
INFORM	CONSULT	INVOLVE	COLLABORATE	EMPOWER
<b>Public Participation Goal:</b>	<b>Public Participation Goal:</b>	<b>Public Participation Goal:</b>	<b>Public Participation Goal:</b>	<b>Public Participation Goal:</b>
To provide the public with balanced and objective information to assist them in understanding the problems, alternatives, opportunities and/or solutions.	To obtain public feedback on analysis, alternatives and/or decisions.	To work directly with the public throughout the process to ensure that public concerns and aspirations are consistently understood and considered.	To partner with the public in each aspect of the decision including the development of alternatives and the identification of the preferred solution.	To place final decision-making in the hands of the public.

# Rules for Engagement



- ❑ Encouraged to actively participate in discussions
- ❑ Each member will be provided time to speak
- ❑ Healthy and civil debate is encouraged
- ❑ Members should be open to new ideas and concepts
- ❑ Respectful of differing opinions
- ❑ Collectively, the group should strive to align varying options (e.g., identify shared goals for different perspectives)

# Partner Shares

- ❑ Upcoming relevant community events or opportunities
- ❑ Pressing issues facing our community or a need someone might be able to address
- ❑ Challenges your organization is facing (especially around equity)





# Root Causes of Barriers to Inequity Discussion

Amber Lenhart & Annette Brandon



# AGENDA

- Brief refresher
- Introduction to root cause activity
- Video: Jason's story
- Root cause discussion activity



# Refresher – Inclusive Benefits of the Energy “System”



## Energy

Physical delivery  
of power



## Social

Inclusive  
processes and  
diverse  
perspectives



## Economic

Job creation,  
economic growth,  
reliable supply,  
and affordability



## Environmental

Public health,  
indoor and outdoor  
air quality, and  
sustainability

# Barriers to Equity

## Equality



The assumption is that everyone benefits from the same supports. This is equal treatment.

## Equity



Everyone gets the supports they need (this is the concept of "affirmative action"), thus producing equity.

## Justice



All 3 can see the game without supports or accommodations because the cause(s) of the inequity was addressed. The systemic barrier has been removed.

What **social**, **economic**, **environmental**, and **political** factors make it difficult for people to access the energy, social, economic, and environmental benefits of the Avista energy system?

## Examples:

- Having reliable sources of energy
- Feeling engaged and included
- Accessing jobs in the industry
- Saving money on energy
- Breathing clean indoor and outdoor air

# Potential Burdens

## Affordability

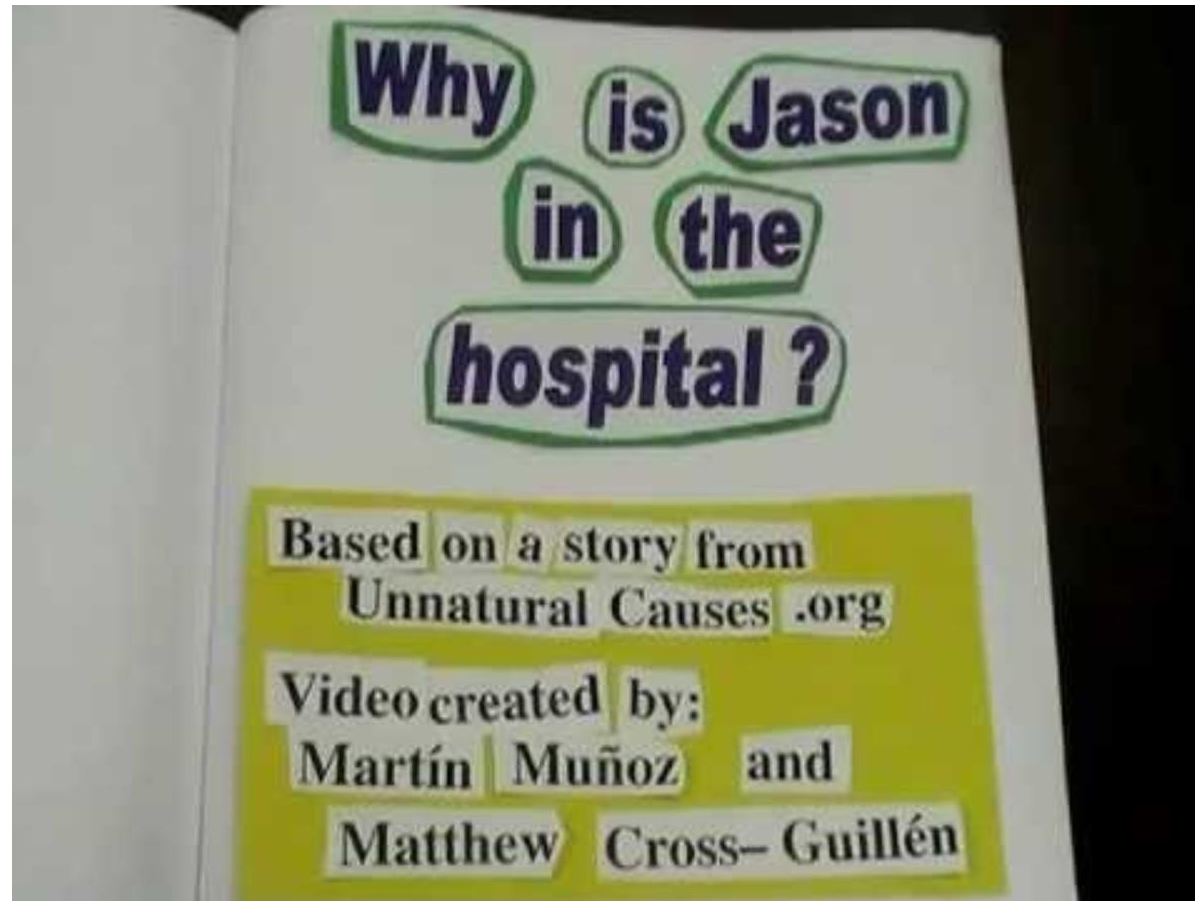
- Displacement of Assets currently fully depreciated (affordability)
- Stranded Assets
- Poor public health outcomes of non-efficient machinery
- Economic impacts on fossil fuel workers

## Access

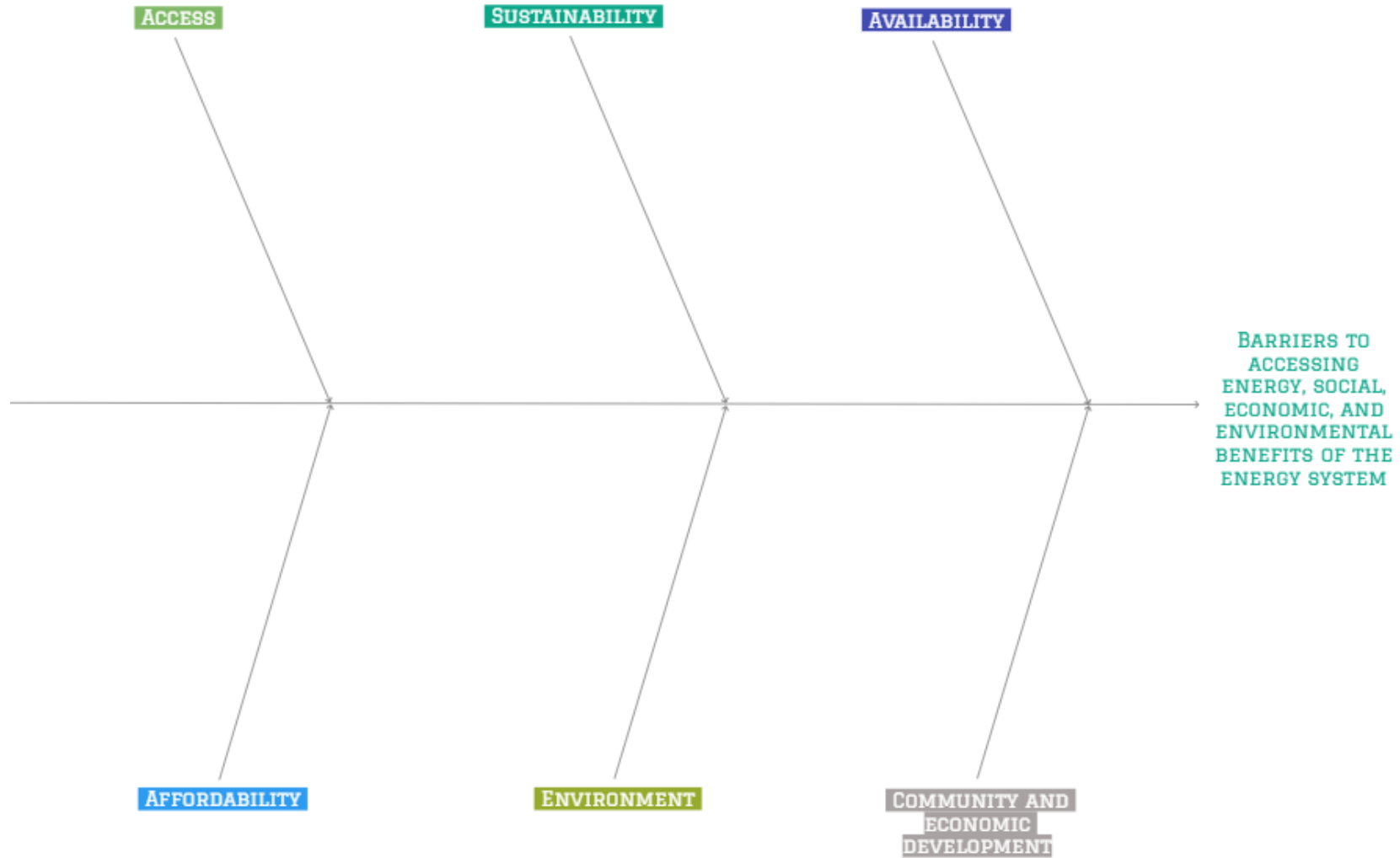
- Not easily accessible for all customers due to financing or other accountability structures
- Renters do not have easy access
- Mobile homes not able to use technology etc.



# Jason's Story: Why is Jason in the hospital?



# Root Cause Discussion





# Power Outages & Medical Needs



**If you or someone in your household uses medical equipment that requires electricity, it's important to be prepared in case of an outage.**

We encourage you to let our Avista CARES team know about your medical needs by calling **(888) 700-2757**. Your name and information will be added to a list of customers who will receive extra notifications in the event of an extended outage.

Customers who use electric medical equipment at home to sustain human life may be eligible for additional support from Avista. Learn more at [myavista.com/medicalequipment](https://myavista.com/medicalequipment)

**Register with Avista if power outages affect your medical needs.**



**Regístrese con Avista si los cortes de energía afectan sus necesidades médicas.**

**Si usted o alguien en su hogar usa equipo médico que requiere electricidad, es importante estar preparado en caso de un corte.**

Le recomendamos que informe a nuestro equipo de Avista CARES sobre sus necesidades médicas llamando al **(800) 227-9187**. Su nombre e información se agregarán a una lista de clientes que recibirán notificaciones adicionales en caso de una interrupción prolongada.

Los clientes que utilizan equipos médicos eléctricos en casa para sustentar vidas humanas pueden ser elegibles para recibir soporte adicional de Avista. Obtenga más información en [myavista.com/medicalequipment](https://myavista.com/medicalequipment)

AVA6101



# Next Meeting | Support Team



**March 20th**  
12:00 – 1:30 pm  
**March 22nd**  
7:30 – 9:00 am

Amber Lenhart  
[Amber.lenhart@gmail.com](mailto:Amber.lenhart@gmail.com)  
509.475.9575

Ana Matthews  
[Ana.Matthews@avistacorp.com](mailto:Ana.Matthews@avistacorp.com)  
509.495.7979

Tamara Bradley  
[Tamara.Bradley@avistacorp.com](mailto:Tamara.Bradley@avistacorp.com)  
509.495.9686