



Avista's 2023 Clean Energy Implementation Plan Public Participation Meeting
 December 12, 2023
 7:30 AM – Zoom







Meeting Comments and Company Responses

Slide 3
Agenda

Topic	Speaker
Introduction Welcome	Tamara Bradley, Manager of Social Impact
Community Message	Latisha Hill, VP Community Affairs & Chief People Officer
Named Communities Investment Fund	Kristine Meyer, Executive Director Avista Foundation Ana Matthews, Senior Energy Efficiency Manager
Connected Communities Project	Stephanie Myers, Energy Delivery Technology Manager
Transportation Electrification	Rendall Farley, Manager of Electric Transportation
Close	Tamara Bradley, Manager of Social Impact

Participant Comment:
Company Response:

Slide 4
Alignment to CEIP – CBIs

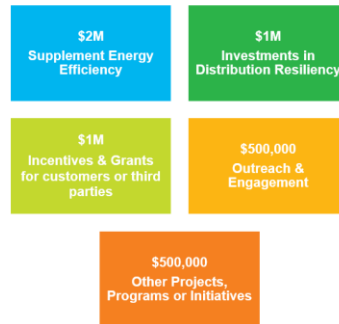
 Affordability	 Energy Security & Resilience	 Access to Clean Energy	 Environmental	 Community Development	 Public Health
Participation in Company Programs Households with High Energy Burden Residential Arrears & Disconnects	Energy Availability Energy Generation Location	Methods/Modes of Outreach & Communication Transportation Electrification	Outdoor Air Quality Greenhouse Gas Emissions	Named Community Clean Energy Investments in Named Communities	Employee Diversity Supplier Diversity Indoor Air Quality

Participant Comment:
Company Response:

Slide 6

Named Communities Investment Fund

- Specific Action dedicated to the equitable distribution of energy and non-energy benefits and reduction in burdens to Named Communities
- Funding is limited to 1% or approximately \$5.0 million of electric revenues, annually

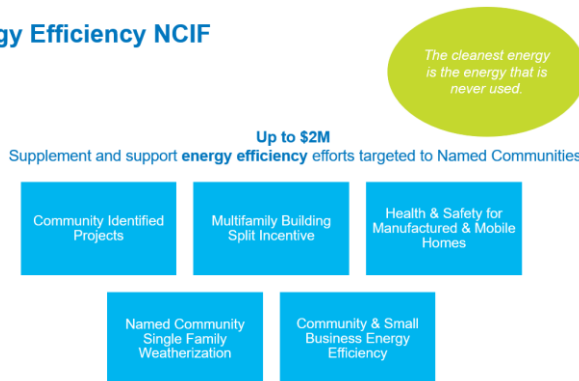


Participant Comment: Who are the named communities?

Company Response: NC make up roughly 46% of our WA service territory and are made of one of two populations, or both. Highly impacted communities, which include our tribal lands that we serve and vulnerable customers. We utilized our EAG to help us define and identify characteristics that could make up a vulnerable customer. Website has our CEIP and map of our Named Communities.

Slide 7

Energy Efficiency NCIF

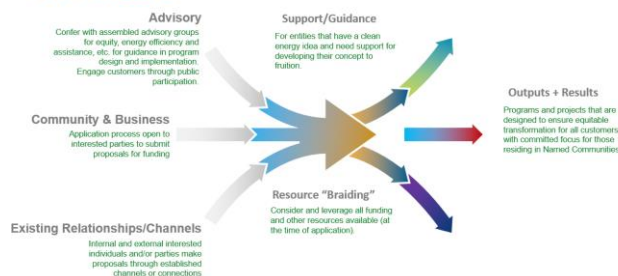


Participant Comment:

Company Response:

Slide 8

NCIF Process



Participant Comment: Will there be a 1% rate increase to cover these new annual costs?



Company Response: Good Morning, responding to the question about the rate impacts associated with the Named Communities Investment Fund. The Fund has a cap of up to \$5 million per year, not a guarantee we will spend that amount. In 2022, we spent roughly \$487k and expect to increase spending in 2023-2025. The funding will not translate into a 1% rate increase as the rate impact is dependent on actual spending. And \$2 million of the funding is dedicated to energy efficiency, which may be included in existing funds already collected from customers.

Slide 9
Factors for NCIF Consideration

Equity	Customer Benefit Indicators	Implementation Plan Specific Actions	Equity Advisory Group Initiatives
<ul style="list-style-type: none"> Affordability Access to Clean Energy Community Development Energy Security Environmental Public Health 	<ol style="list-style-type: none"> Participation in Company Programs Number of households with a High Energy Burden (>6%) Availability of Methods/Modes of Outreach and Communication Transportation Electrification Named Community Clean Energy Investments in Named Communities Energy Availability Energy Generation Location Outdoor Air Quality Greenhouse Gas Emissions Employee Diversity Supplier Diversity Indoor Air Quality 	<ul style="list-style-type: none"> Community Identified Project Multifamily Building Split Incentive Health & Safety for manufactured and mobile home Single Family Weatherization Community Energy Assistance Small Business Energy Assistance 	<p>Energy Efficiency in Named Communities</p> <ol style="list-style-type: none"> Improved awareness and energy efficiency for Spokane Tribe, multi-family and manufactured homes Increased Tree Canopy Increased access to products and appliances Increased awareness and engagement in EE programs Matching funds for EE grant applications Improved EE for those without stable housing

Participant Comment: is there support for farms? Rural areas and smaller farms that can benefit from solar etc. Thank you.

Company Response: We are making concentrated efforts to have and deliver more projects in rural areas.

Slide 10

Named Communities Projects in 2023



Renovation of community food pantry in Stevens County

Participant Comment:
Company Response:

Slide 11



Named Communities Projects in 2023



Renovation of affordable housing complex in Spokane County



Replacement of Packaged Thermal Air Conditioners in affordable housing complex in Spokane County

Participant Comment: I'm all for better ways to produce energy more affordably. How does clean energy reduce cost of energy? Our school the largest variable cost is energy?

Company Response: It really depends on long-term energy resources. Like anything – when the market improves, things may or may not be reduced. Clean energy is about making it more affordable for customers even if the cost is increasing. We utilize energy assistance and energy efficiency to help offset rising cost for customers

Slide 12

Named Communities Projects in 2023



Job skills program for women moving out of homelessness

Photo credit: The Lunch Box | Human Resources

Participant Comment:
Company Response:

Slide 13



Named Communities Projects in 2023



Photo Credit: Spokane Journal of Business

Partnership with community action agency to provide energy efficiency upgrades in Spokane County Mobile Home Co-op and manufactured homes in Census Block with high portion of low-income



Duct sealing for manufactured and mobile homes in Stevens, Ferry and Pend Oreille counties

Participant Comment: Does Avista partner with local contractor to do such work, or has the organization thought on partnering to retrain workers to gain skills needed for the SNAP energy renovation?

Company Response: We do partner with local organizations and contractors. We are always open and willing to develop new partners.

Slide 14

Named Communities Projects in 2023



Spokane Tribe's Tribal Administrative Building: support for grant submission for Clean Energy Fund to conduct energy efficiency and decarbonization.



Project Scope

Solar Array, Battery, Energy Efficiency, and Electric Vehicle Charging

Spokane East Central MLK Community Center: solar with battery storage systems, energy efficiency, EV charging along with educational and outreach for the neighborhood residents about the benefits of the project to support critical needs during mass outages.

Participant Comment:
Company Response:

Slide 16

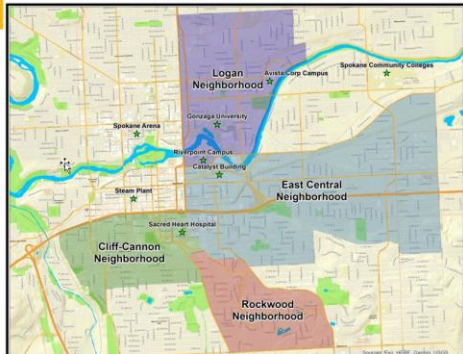


A group of grid-interactive efficient buildings (GEBs) with diverse, flexible end use equipment and other distributed energy resources (DERs) that collectively work to maximize building, community, and grid utilization while meeting occupants' comfort and needs



Participant Comment:
Company Response:

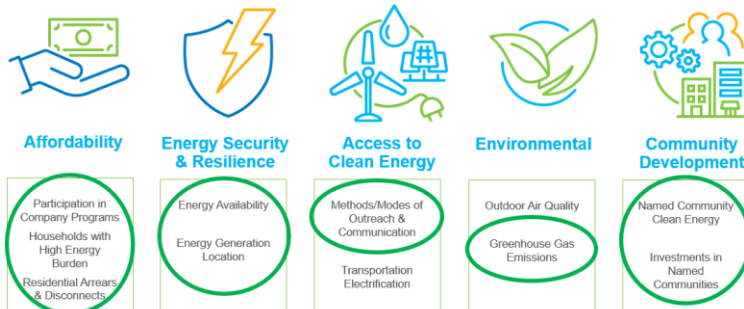
Slide 17
Connected Communities



- ✓ **Focused on one substation** nearing capacity (3rd & Hatch)
- ✓ **Engage 75-125 customers**
 - ✓ Residential, multitenant, SMB, C&I
- ✓ **The project will unlock:**
 - ✓ 1.0 - 2.25 MW of flexibility using buildings & DERs
 - ✓ Save up to 900 MWh/yr from EE measures
 - ✓ Reduce emissions by up to 650,000 lb CO₂e/yr
- ✓ **Playbooks to scale**

Participant Comment:
Company Response:

Slide 18
Alignment to CEIP – CBIs

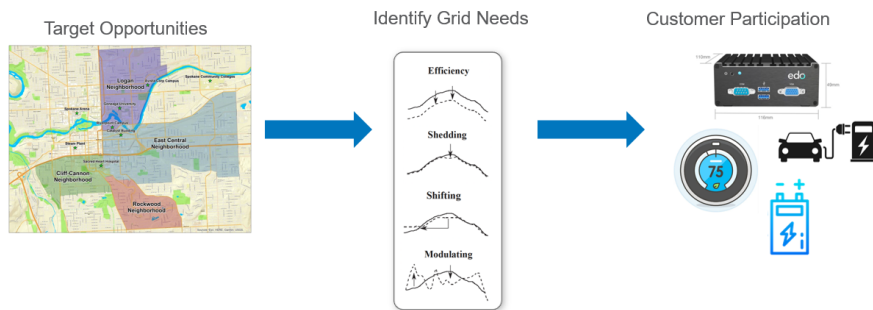


Participant Comment:
Company Response:

Slide 19



How will the program work?

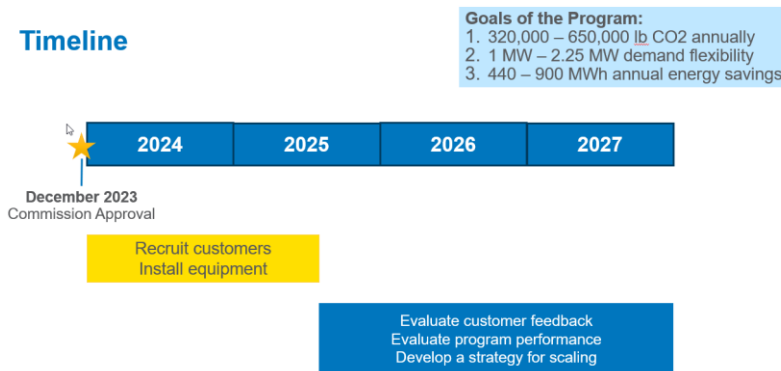


Participant Comment: How do you induce customers to turn down their thermostats?

Company Response: Yes, that is plan without jeopardizing the comfort of a customer.

Slide 20

Timeline

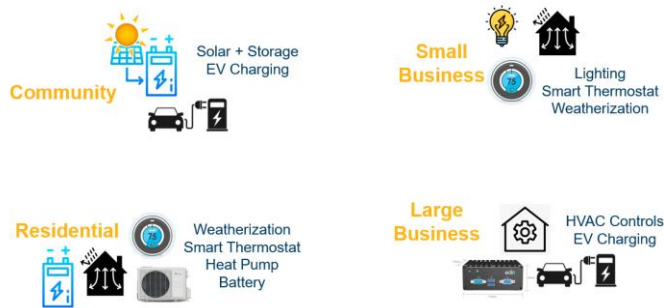


Participant Comment: Do you anticipate that we are headed to "time of use rates?"

Company Response: We have 2 pilots launching in 2024 that will last a couple years. We will evaluate the pilots after that and determine if we will offer TOU rates beyond that, which would be later in the 2020s if we do.

Slide 21

Proposed Customer Programs



Participant Comment: Do you think given the historic federal monies being put back into the country there might be additional opportunities for Avista to apply for funds that could support expansion of programs? It seems like the Connected Communities program has a lot of overlap with programs that renovate existing residential and commercial buildings to increase energy efficiency (and therefore decreasing usage). With the Spokane metros high level of census tracts with high poverty, it seems like there will be increasing need.

Company Response: We have 2 pilots launching in 2024 that will last a couple years. We will evaluate the pilots after that and determine if we will offer TOU rates beyond that, which would be later in the 2020s if we do.

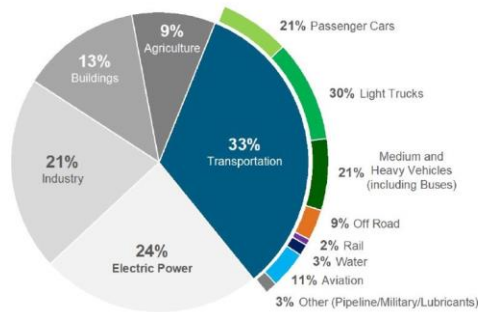
Participant Comment: Could this program include heat pumps and solar panels on roofs within the area?

Company Response: Avista responded by going through the program offerings.

Participant Comment: Is there an income component for participation?

Company Response: There is no income component for participation.

Slide 23
Electric Transportation – a better energy future!



Participant Comment:
 Company Response:

Slide 24

Summary

Estimated Cost	\$1,418/year
Customer Annual Cost	\$18,327/year
Savings	\$14,909/year

81% Reduction
 Fuel cost: \$1,418/year
 New total: \$14,909/year

Estimated carbon emission reduction

Current	8.25 MT/year
With EV	2.19 MT/year
Savings	\$4,977/year

75% Reduction
 Difference: \$4,977/yr
 New total: \$4,977/yr

Check out the advanced fleet electrification tool at: myavista.com/transportation

Participant Comment:
 Company Response:

Slide 25
Check it out at: myavista.com/transportation

- Charging Infrastructure
- Community and Low-Income Support
- Education and Outreach
- Fleet Electrification Advisory Services
- Load Management & Grid Integration
- Rate Design
- Technology and Market Research
- Utility Fleets, Facilities and Employee Engagement



Participant Comment:
 Company Response:



Slide 26

AC Level 2 charging for residential and commercial customers

2023 thru Nov	Residential ACL2	Commercial ACL2
# Ports Installed	254	129
# Ports In-Service	731	581
Installation Cost per Port including charger	\$1,863	\$4,546
Lead Time	3 weeks	3.7 months
Customer Satisfaction	98%	95%



- No-cost installations for Community-Based Organizations (CBOs)
- **CBI: 181 charging ports in Named Communities**

Participant Comment: How many of these ports are in the Pullman/Moscow or Lewiston/Clarkston area, if any?

Company Response: We have several in that area.

Slide 27

Public DC Fast Charging for Community Benefits



180kW DCFC at The HIVE in Spokane, WA – expandable to 1MW

- 17 sites installed in Eastern Washington
- 12 sites (70%) in Named Communities (at Community Centers, Libraries, Rural Towns, etc)
- Facilities clean and affordable ridesharing innovations for communities

Participant Comment:

Company Response:

Slide 28

Building Momentum with Community & Low-Income Support Programs

- Providing Community-based Organizations (CBOs) with EVs and charging
 - 10 active partnerships to-date
- Prioritize EV charging in named communities and small rural towns; community centers, & libraries
- Support electric school bus grants and charging infrastructure
- **CBI: 896 trips provided by CBO partners in 2022**



Participant Comment:



Company Response:

Slide 29

Future Initiatives and Growth in Community Investments



Electric School Bus Projects



Fleet Advisory Services



Public Charging with On-site Renewables, Storage, & Micro-mobility



Ride-Sharing and Public Transit Support

Participant Comment: For those of us who are already using solar & putting energy back into the grid (for which we get credits that are zeroed out in the Spring), might the program help us with the cost of a solar storage battery?? Thanks!

Company Response:

Slide 30

www.myavista.com/ceta



Clean Energy Implementation Plan (CEIP)

CEIP Public Comment Form

Avista's Clean Energy Implementation Plan comment form allows customers to voice their thoughts and ask questions of Avista regarding its transition to a cleaner future. Share yours here:

Reason for your comment?

Select

Your comment

Characters remaining: 4000

Please contact me regarding this comment

First and Last Name

Contact method

Email

Phone

Phone number

Submit

Participant Comment:
Company Response:

Slide 31



Thank you



Participant Comment:
Company Response: